

PFK-2 liv Polyclonal Antibody

Description

Product type	Primary Antibody
Code	BT-AP07090
Host	Rabbit
Isotype	IgG
Size	20ul, 50ul, 100ul
Immunogen	The antiserum was produced against synthesized peptide derived from human PFKFB1. AA range:406-455
Mol wt	54681
Species reactivity	Human, Mouse, Rat
Clonality	Polyclonal
Recommended application	WB, IHC-p, ELISA
Concentration	1 mg/ml
Full name	PFK-2 liv Antibody
Synonyms	PFKFB1; F6PK; PFRX; 6-phosphofructo-2-kinase/fructose-2,6-bisphosphatase 1; 6PF-2-K/Fru-2,6-P2ase 1; PFK/FBPase 1; 6PF-2-K/Fru-2,6-P2ase liver isozyme

This product is for research use only, not for use in human, therapeutic or diagnostic procedure.

Background

PFKFB1 encodes a member of the family of bifunctional 6-phosphofructo-2-kinase: fructose-2,6-biphosphatase enzymes. The enzyme forms a homodimer that catalyzes both the synthesis and degradation of fructose-2,6-biphosphate using independent catalytic domains. Fructose-2,6-biphosphate is an activator of the glycolysis pathway and an inhibitor of the gluconeogenesis pathway. Consequently, regulating fructose-2,6-biphosphate levels through the activity of 6-phosphofructo-2-kinase/fructose-2,6-biphosphatase 1 is thought to regulate glucose homeostasis. Multiple alternatively spliced transcript variants have been found for PFKFB1.

Recommended Dilution

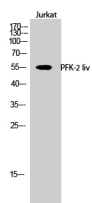
WB: 1: 500 - 1: 2000

IHC: 1: 100 - 1: 300

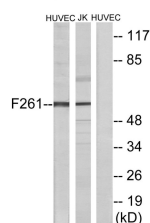
ELISA: 1: 5000

Not yet tested in other applications.

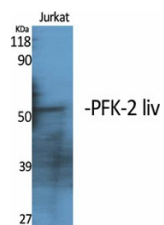
Images



Western Blot analysis of Jurkat cells using PFK-2 liv Polyclonal Antibody



Western blot analysis of lysates from HUVEC cells and Jurkat cells, using PFKFB1 Antibody. The lane on the right is blocked with the synthesized peptide.



Western Blot analysis of various cells using PFK-2 liv Polyclonal Antibody

Storage

-20°C for one year

501 Changsheng S Rd, Nanhu Dist, Jiaxing, Zhejiang, China

Tel: 86 21 31007137 | E-mail: save@bt-laboratory.com | www.bt-laboratory.com