

PFK-2 liv/tes Polyclonal Antibody

Description

Product type	Primary Antibody
Code	BT-AP07091
Host	Rabbit
Isotype	IgG
Size	20ul, 50ul, 100ul
Immunogen	The antiserum was produced against synthesized peptide derived from human PFKFB1/4. AA range:331-380
Mol wt	54681/54040
Species reactivity	Human, Mouse, Rat
Clonality	Polyclonal
Recommended application	WB, ELISA
Concentration	1 mg/ml
Full name	PFK-2 liv/tes Antibody
Synonyms	PFKFB1; F6PK; PFRX; 6-phosphofructo-2-kinase/fructose-2,6-bisphosphatase 1; 6PF-2-K/Fru-2,6-P2ase 1; PFK/FBPase 1; 6PF-2-K/Fru-2,6-P2ase liver isozyme; PFKFB4; 6-phosphofructo-2-kinase/fructose-2,6-b

This product is for research use only, not for use in human, therapeutic or diagnostic procedure.

Background

PFKFB1 encodes a member of the family of bifunctional 6-phosphofructo-2-kinase: fructose-2,6-biphosphatase enzymes. The enzyme forms a homodimer that catalyzes both the synthesis and degradation of fructose-2,6-biphosphate using independent catalytic domains. Fructose-2,6-biphosphate is an activator of the glycolysis pathway and an inhibitor of the gluconeogenesis pathway. Consequently, regulating fructose-2,6-biphosphate levels through the activity of 6-phosphofructo-2-kinase/fructose-2,6-biphosphatase 1 is thought to regulate glucose homeostasis. Multiple alternatively spliced transcript variants have been found for PFKFB1.

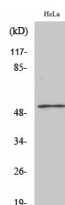
Recommended Dilution

WB: 1: 500 - 1: 2000

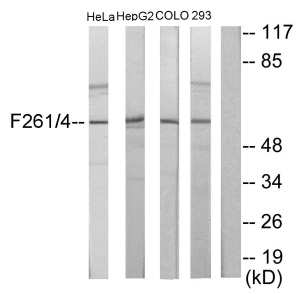
ELISA: 1: 20000

Not yet tested in other applications.

Images



Western Blot analysis of various cells using PFK-2 liv/tes Polyclonal Antibody



Western blot analysis of lysates from HeLa, HepG2, COLO205, and 293 cells, using PFKFB1/4 Antibody. The lane on the right is blocked with the synthesized peptide.

Storage

-20°C for one year

501 Changsheng S Rd, Nanhu Dist, Jiaxing, Zhejiang, China

Tel: 86 21 31007137 | E-mail: save@bt-laboratory.com | www.bt-laboratory.com