

## PFK-B Polyclonal Antibody

### Description

<b>Product type</b>	Primary Antibody
<b>Code</b>	BT-AP07092
<b>Host</b>	Rabbit
<b>Isotype</b>	IgG
<b>Size</b>	20ul, 50ul, 100ul
<b>Immunogen</b>	The antiserum was produced against synthesized peptide derived from human K6PL. AA range:691-740
<b>Mol wt</b>	85018
<b>Species reactivity</b>	Human, Mouse, Rat
<b>Clonality</b>	Polyclonal
<b>Recommended application</b>	WB, IHC-p, ELISA
<b>Concentration</b>	1 mg/ml
<b>Full name</b>	PFK-B Antibody
<b>Synonyms</b>	PFKL; 6-phosphofructokinase; liver type; Phosphofructo-1-kinase isozyme B; PFK-B; Phosphofructokinase 1; Phosphohexokinase

This product is for research use only, not for use in human, therapeutic or diagnostic procedure.

### Background

PFKL encodes the liver (L) subunit of an enzyme that catalyzes the conversion of D-fructose 6-phosphate to D-fructose 1,6-bisphosphate, which is a key step in glucose metabolism (glycolysis). This enzyme is a tetramer that may be composed of different subunits encoded by distinct genes in different tissues. Alternative splicing results in multiple transcript variants.

### Recommended Dilution

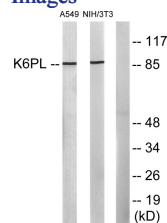
WB: 1: 500 - 1: 2000

IHC: 1: 100 - 1: 300

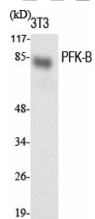
ELISA: 1: 20000

Not yet tested in other applications.

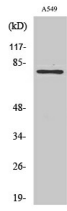
### Images



Western blot analysis of lysates from A549 and NIH/3T3 cells, using K6PL Antibody. The lane on the right is blocked with the synthesized peptide.



Western Blot analysis of various cells using PFK-B Polyclonal Antibody diluted at 1:1000



Western Blot analysis of NIH-3T3 cells using PFK-B Polyclonal Antibody diluted at 1:1000

### Storage

-20°C for one year

501 Changsheng S Rd, Nanhu Dist, Jiaxing, Zhejiang, China

Tel: 86 21 31007137 | E-mail: [save@bt-laboratory.com](mailto:save@bt-laboratory.com) | [www.bt-laboratory.com](http://www.bt-laboratory.com)