

PGBD1 Polyclonal Antibody

Description

Product type	Primary Antibody
Code	BT-AP07095
Host	Rabbit
Isotype	IgG
Size	20ul, 50ul, 100ul
Immunogen	The antiserum was produced against synthesized peptide derived from human PGBD1. AA range:241-290
Mol wt	92515
Species reactivity	Human
Clonality	Polyclonal
Recommended application	WB, IHC-p, ELISA
Concentration	1 mg/ml
Full name	PGBD1 Antibody
Synonyms	PGBD1; hucep-4; PiggyBac transposable element-derived protein 1; Cerebral protein 4

This product is for research use only, not for use in human, therapeutic or diagnostic procedure.

Background

The piggyBac family of proteins, found in diverse animals, are transposases related to the transposase of the canonical piggyBac transposon from the moth, *Trichoplusia ni*. This family also includes genes in several genomes, including human, that appear to have been derived from the piggyBac transposons. PGBD1 belongs to the subfamily of piggyBac transposable element derived (PGBD) genes. The PGBD proteins appear to be novel, with no obvious relationship to other transposases, or other known protein families. PGBD1 product is specifically expressed in the brain, however, its exact function is not known. Alternative splicing results in multiple transcript variants encoding the same protein.

Recommended Dilution

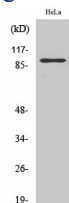
WB: 1: 500 - 1: 2000

IHC: 1: 100 - 1: 300

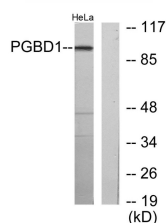
ELISA: 1: 20000

Not yet tested in other applications.

Images



Western Blot analysis of various cells using PGBD1 Polyclonal Antibody cells nucleus.



Western blot analysis of lysates from HeLa cells, using PGBD1 Antibody. The lane on the right is blocked with the synthesized peptide.

Storage

-20°C for one year

501 Changsheng S Rd, Nanhu Dist, Jiaxing, Zhejiang, China

Tel: 86 21 31007137 | E-mail: save@bt-laboratory.com | www.bt-laboratory.com