

PGE synthase Polyclonal Antibody

Description

Product type	Primary Antibody
Code	BT-AP07098
Host	Rabbit
Isotype	IgG
Size	20ul, 50ul, 100ul
Immunogen	The antiserum was produced against synthesized peptide derived from human PGE synthase. AA range:30-79
Mol wt	17102
Species reactivity	Human, Mouse, Rat
Clonality	Polyclonal
Recommended application	WB, ELISA
Concentration	1 mg/ml
Full name	PGE synthase Antibody
Synonyms	PTGES; MGST1L1; MPGES1; PGES; PIG12; Prostaglandin E synthase; Microsomal glutathione S-transferase 1-like 1; MGST1-L1; Microsomal prostaglandin E synthase 1; MPGES-1; p53-induced gene 12 protein

This product is for research use only, not for use in human, therapeutic or diagnostic procedure.

Background

Prostaglandin E synthase encoded by PTGES is a glutathione-dependent prostaglandin E synthase. The expression of PTGES has been shown to be induced by proinflammatory cytokine interleukin 1 beta (IL1B). Its expression can also be induced by tumor suppressor protein TP53, and may be involved in TP53 induced apoptosis. Knockout studies in mice suggest that PTGES may contribute to the pathogenesis of collagen-induced arthritis and mediate acute pain during inflammatory responses.

Recommended Dilution

WB: 1: 500 - 1: 2000

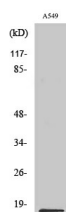
ELISA: 1: 10000

Not yet tested in other applications.

Images



Western blot analysis of lysate from A549 cells, using PGE synthase antibody.



Western Blot analysis of various cells using PGE synthase Polyclonal Antibody diluted at 1:500

Storage

-20°C for one year

501 Changsheng S Rd, Nanhu Dist, Jiaxing, Zhejiang, China

Tel: 86 21 31007137 | E-mail: save@bt-laboratory.com | www.bt-laboratory.com