

MYBPC3 Polyclonal Antibody

Description

Product type	Primary Antibody
Code	BT-AP07101
Host	Rabbit
Isotype	IgG
Size	100ul, 50ul, 20ul
Immunogen	The antiserum was produced against synthesized peptide derived from human MYBPC3. AA range:329-378
Mol wt	140606
Species reactivity	Human, Rat, Mouse
Clonality	Polyclonal
Recommended application	IHC-p, IF, ELISA
Concentration	1 mg/ml
Full name	Myosin-binding protein C cardiac-type
Synonyms	Myosin-binding protein C cardiac-type; MYBPC3; Myosin-binding protein C; cardiac-type; Cardiac MyBP-C; C-protein; cardiac muscle isoform

This product is for research use only, not for use in human, therapeutic or diagnostic procedure.

Background

MYBPC3 encodes the cardiac isoform of myosin-binding protein C. Myosin-binding protein C is a myosin-associated protein found in the cross-bridge-bearing zone (C region) of A bands in striated muscle. MYBPC3, the cardiac isoform, is expressed exclusively in heart muscle. Regulatory phosphorylation of the cardiac isoform in vivo by cAMP-dependent protein kinase (PKA) upon adrenergic stimulation may be linked to modulation of cardiac contraction. Mutations in MYBPC3 are one cause of familial hypertrophic cardiomyopathy.

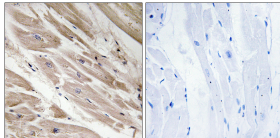
Recommended Dilution

IHC-p: 1: 100 - 1: 300

ELISA: 1: 10000

Not yet tested in other applications.

Images



Immunohistochemistry analysis of paraffin-embedded human heart tissue, using MYBPC3 Antibody. The picture on the right is blocked with the synthesized peptide.

Storage

-20°C for 1 year