

PGLS Polyclonal Antibody

Description

Product type	Primary Antibody
Code	BT-AP07102
Host	Rabbit
Isotype	IgG
Size	20ul, 50ul, 100ul
Immunogen	The antiserum was produced against synthesized peptide derived from human PGLS. AA range:191-240
Mol wt	27547
Species reactivity	Human
Clonality	Polyclonal
Recommended application	WB, IHC-p, ELISA
Concentration	1 mg/ml
Full name	PGLS Antibody
Synonyms	PGLS; 6-phosphogluconolactonase; 6PGL

This product is for research use only, not for use in human, therapeutic or diagnostic procedure.

Background

PGLS (6-Phosphogluconolactonase) is a Protein Coding gene. Diseases associated with PGLS include lymphatic system disease. Among its related pathways are Metabolism and Glycosaminoglycan metabolism. Gene Ontology (GO) annotations related to PGRMC2 include monosaccharide binding and 6-phosphogluconolactonase activity.

Recommended Dilution

WB: 1: 500 - 1: 2000

IHC: 1: 100 - 1: 300

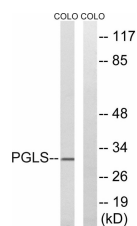
ELISA: 1: 40000

Not yet tested in other applications.

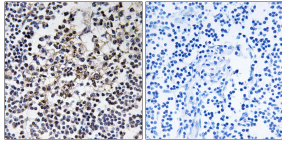
Images



Western Blot analysis of various cells using PGLS Polyclonal Antibody



Western blot analysis of lysates from COLO cells, using PGLS Antibody. The lane on the right is blocked with the synthesized peptide.



Immunohistochemistry analysis of paraffin-embedded human lymph node tissue, using PGLS Antibody. The picture on the right is blocked with the synthesized peptide.

Storage

-20°C for one year

501 Changsheng S Rd, Nanhu Dist, Jiaxing, Zhejiang, China

Tel: 86 21 31007137 | E-mail: save@bt-laboratory.com | www.bt-laboratory.com