

PGRMC2 Polyclonal Antibody

Description

Product type	Primary Antibody
Code	BT-AP07107
Host	Rabbit
Isotype	IgG
Size	20ul, 50ul, 100ul
Immunogen	The antiserum was produced against synthesized peptide derived from human PGRMC2. AA range:174-223
Mol wt	23818
Species reactivity	Human, Mouse, Rat
Clonality	Polyclonal
Recommended application	WB, ELISA
Concentration	1 mg/ml
Full name	PGRMC2 Antibody
Synonyms	PGRMC2; DG6; PMBP; Membrane-associated progesterone receptor component 2; Progesterone membrane-binding protein; Steroid receptor protein DG6

This product is for research use only, not for use in human, therapeutic or diagnostic procedure.

Background

PGRMC2 (Progesterone Receptor Membrane Component 2) is a Protein Coding gene. Gene Ontology (GO) annotations related to PGRMC2 include heme binding and steroid binding. An important paralog of PGRMC2 is PGRMC1.

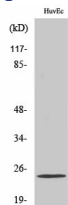
Recommended Dilution

WB: 1: 500 - 1: 2000

ELISA: 1: 5000

Not yet tested in other applications.

Images



Western Blot analysis of various cells using PGRMC2 Polyclonal Antibody diluted at 1:1000

Storage

-20°C for one year