

PHACTR4 Polyclonal Antibody

Description

Product type	Primary Antibody
Code	BT-AP07112
Host	Rabbit
Isotype	IgG
Size	20ul, 50ul, 100ul
Immunogen	The antiserum was produced against synthesized peptide derived from human PHACTR4. AA range:363-412
Mol wt	78211
Species reactivity	Human
Clonality	Polyclonal
Recommended application	WB, ELISA
Concentration	1 mg/ml
Full name	PHACTR4 Antibody
Synonyms	PHACTR4; Phosphatase and actin regulator 4

This product is for research use only, not for use in human, therapeutic or diagnostic procedure.

Background

PHACTR4 (phosphatase and actin regulator 4) encodes a member of the phosphatase and actin regulator (PHACTR) family. Other PHACTR family members have been shown to inhibit protein phosphatase 1 (PP1) activity, and the homolog of PHACTR4 in the mouse has been shown to interact with actin and PP1. Multiple transcript variants encoding different isoforms have been found for PHACTR4.

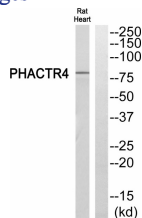
Recommended Dilution

WB: 1: 500 - 1: 2000

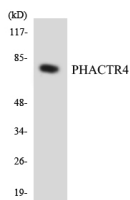
ELISA: 1: 20000

Not yet tested in other applications.

Images



Western blot analysis of PHACTR4 Antibody. The lane on the right is blocked with the PHACTR4 peptide.



Western blot analysis of the lysates from HeLa cells using PHACTR4 antibody.

Storage

-20°C for one year

501 Changsheng S Rd, Nanhu Dist, Jiaxing, Zhejiang, China

Tel: 86 21 31007137 | E-mail: save@bt-laboratory.com | www.bt-laboratory.com