

PHF3 Polyclonal Antibody

Description

Product type	Primary Antibody
Code	BT-AP07118
Host	Rabbit
Isotype	IgG
Size	20ul, 50ul, 100ul
Immunogen	The antiserum was produced against synthesized peptide derived from human PHF3. AA range:1990-2039
Mol wt	229481
Species reactivity	Human, Mouse
Clonality	Polyclonal
Recommended application	WB, IHC-p, ELISA
Concentration	1 mg/ml
Full name	PHF3 Antibody
Synonyms	PHF3; KIAA0244; PHD finger protein 3

This product is for research use only, not for use in human, therapeutic or diagnostic procedure.

Background

PHF3 encodes a member of a PHD finger-containing gene family. PHF3 may function as a transcription factor and may be involved in glioblastomas development. Alternative splicing results in multiple transcript variants.

Recommended Dilution

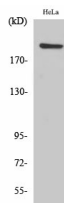
WB: 1: 500 - 1: 2000

IHC: 1: 100 - 1: 300

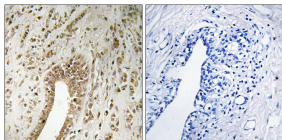
ELISA: 1: 40000

Not yet tested in other applications.

Images



Western Blot analysis of various cells using PHF3 Polyclonal Antibody cells nucleus.



Immunohistochemistry analysis of paraffin-embedded human breast carcinoma tissue, using PHF3 Antibody. The picture on the right is blocked with the synthesized peptide.

Storage

-20°C for one year