

## PHKG1 Polyclonal Antibody

### Description

<b>Product type</b>	Primary Antibody
<b>Code</b>	BT-AP07123
<b>Host</b>	Rabbit
<b>Isotype</b>	IgG
<b>Size</b>	20ul, 50ul, 100ul
<b>Immunogen</b>	The antiserum was produced against synthesized peptide derived from human PHKG1. AA range:241-290
<b>Mol wt</b>	45024
<b>Species reactivity</b>	Human
<b>Clonality</b>	Polyclonal
<b>Recommended application</b>	WB, ELISA
<b>Concentration</b>	1 mg/ml
<b>Full name</b>	PHKG1 Antibody
<b>Synonyms</b>	PHKG1; PHKG; Phosphorylase b kinase gamma catalytic chain; skeletal muscle isoform; Phosphorylase kinase subunit gamma-1

This product is for research use only, not for use in human, therapeutic or diagnostic procedure.

### Background

PHKG1 is a member of the Ser/Thr protein kinase family and encodes a protein with one protein kinase domain and two calmodulin-binding domains. Phosphorylase kinase catalytic subunit gamma 1 is the catalytic member of a 16 subunit protein kinase complex which contains equimolar ratios of 4 subunit types. The complex is a crucial glycogenolytic regulatory enzyme. PHKG1 has two pseudogenes at chromosome 7q11. 1 and one at chromosome 11p11. 2. Multiple transcript variants encoding different isoforms have been found for PHKG1.

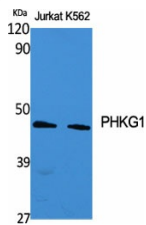
### Recommended Dilution

WB: 1: 500 - 1: 2000

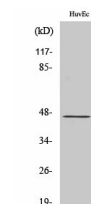
ELISA: 1: 20000

Not yet tested in other applications.

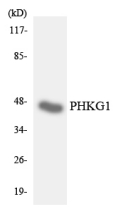
### Images



Western Blot analysis of various cells using PHKG1 Polyclonal Antibody



Western Blot analysis of HepG2 cells using PHKG1 Polyclonal Antibody



Western blot analysis of the lysates from HUVEC cells using PHKG1 antibody.

### Storage

-20°C for one year

501 Changsheng S Rd, Nanhu Dist, Jiaxing, Zhejiang, China

Tel: 86 21 31007137 | E-mail: [save@bt-laboratory.com](mailto:save@bt-laboratory.com) | [www.bt-laboratory.com](http://www.bt-laboratory.com)