

## PHLDA3 Polyclonal Antibody

### Description

<b>Product type</b>	Primary Antibody
<b>Code</b>	BT-AP07125
<b>Host</b>	Rabbit
<b>Isotype</b>	IgG
<b>Size</b>	20ul, 50ul, 100ul
<b>Immunogen</b>	The antiserum was produced against synthesized peptide derived from human PHLDA3. AA range:21-70
<b>Mol wt</b>	13891
<b>Species reactivity</b>	Human, Mouse, Rat
<b>Clonality</b>	Polyclonal
<b>Recommended application</b>	WB, IHC-p, ELISA
<b>Concentration</b>	1 mg/ml
<b>Full name</b>	PHLDA3 Antibody
<b>Synonyms</b>	PHLDA3; TIH1; Pleckstrin homology-like domain family A member 3; TDAG51/Ipl homolog 1

This product is for research use only, not for use in human, therapeutic or diagnostic procedure.

### Background

PHLDA3 (Pleckstrin Homology Like Domain Family A Member 3) is a Protein Coding gene. Gene Ontology (GO) annotations related to PHLDA3 include phosphatidylinositol-4,5-bisphosphate binding and phosphatidylinositol-3-phosphate binding. An important paralog of PHLDA3 is PHLDA1.

### Recommended Dilution

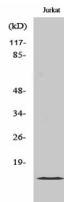
WB: 1: 500 - 1: 2000

IHC: 1: 100 - 1: 300

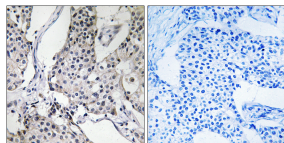
ELISA: 1: 40000

Not yet tested in other applications.

### Images



Western Blot analysis of various cells using PHLDA3 Polyclonal Antibody



Immunohistochemistry analysis of paraffin-embedded human breast carcinoma tissue, using PHLDA3 Antibody. The picture on the right is blocked with the synthesized peptide.

### Storage

-20°C for one year