

## Photomedin-1 Polyclonal Antibody

### Description

<b>Product type</b>	Primary Antibody
<b>Code</b>	BT-AP07128
<b>Host</b>	Rabbit
<b>Isotype</b>	IgG
<b>Size</b>	20ul, 50ul, 100ul
<b>Immunogen</b>	The antiserum was produced against synthesized peptide derived from human OLFML2A. AA range:311-360
<b>Mol wt</b>	73054
<b>Species reactivity</b>	Human
<b>Clonality</b>	Polyclonal
<b>Recommended application</b>	WB, IF, ELISA
<b>Concentration</b>	1 mg/ml
<b>Full name</b>	Photomedin-1 Antibody
<b>Synonyms</b>	OLFML2A; Olfactomedin-like protein 2A; Photomedin-1

This product is for research use only, not for use in human, therapeutic or diagnostic procedure.

### Background

OLFML2A (Olfactomedin Like 2A) is a Protein Coding gene. GO annotations related to this gene include protein homodimerization activity and extracellular matrix binding. An important paralog of this gene is OLFM1.

### Recommended Dilution

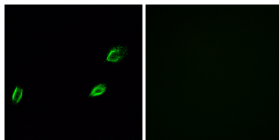
WB: 1: 500 - 1: 2000

IF: 1: 200 - 1: 1000

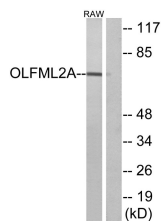
ELISA: 1: 10000

Not yet tested in other applications.

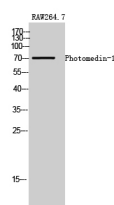
### Images



Immunofluorescence analysis of A549 cells, using OLFML2A Antibody. The picture on the right is blocked with the synthesized peptide.



Western blot analysis of lysates from RAW264.7 cells, using OLFML2A Antibody. The lane on the right is blocked with the synthesized peptide.



Western Blot analysis of RAW264.7 cells using Photomedin-1 Polyclonal Antibody

## Storage

-20°C for one year

501 Changsheng S Rd, Nanhu Dist, Jiaxing, Zhejiang, China

Tel: 86 21 31007137 | E-mail: [save@bt-laboratory.com](mailto:save@bt-laboratory.com) | [www.bt-laboratory.com](http://www.bt-laboratory.com)