

Photomedin-2 Polyclonal Antibody

Description

Product type	Primary Antibody
Code	BT-AP07129
Host	Rabbit
Isotype	IgG
Size	20ul, 50ul, 100ul
Immunogen	The antiserum was produced against synthesized peptide derived from human OLFML2B. AA range:171-220
Mol wt	83999
Species reactivity	Human, Mouse
Clonality	Polyclonal
Recommended application	WB, IHC-p, IF, ELISA
Concentration	1 mg/ml
Full name	Photomedin-2 Antibody
Synonyms	OLFML2B; Olfactomedin-like protein 2B; Photomedin-2

This product is for research use only, not for use in human, therapeutic or diagnostic procedure.

Background

OLFML2B (Olfactomedin Like 2B) is a Protein Coding gene. Gene Ontology (GO) annotations related to OLFML2B include extracellular matrix binding. An important paralog of OLFML2B is OLFM1.

Recommended Dilution

WB: 1: 500 - 1: 2000

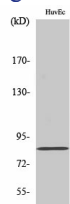
IHC: 1: 100 - 1: 300

IF: 1: 200 - 1: 1000

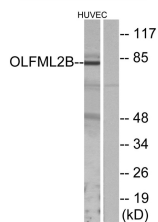
ELISA: 1: 10000

Not yet tested in other applications.

Images



Western Blot analysis of various cells using Photomedin-2 Polyclonal Antibody



Western blot analysis of lysates from HUVEC cells, using OLFML2B Antibody. The lane on the right is blocked with the synthesized peptide.

Storage

-20°C for one year

501 Changsheng S Rd, Nanhu Dist, Jiaxing, Zhejiang, China

Tel: 86 21 31007137 | E-mail: save@bt-laboratory.com | www.bt-laboratory.com