

PI 3-kinase p85 Alpha Polyclonal Antibody

Description

Product type	Primary Antibody
Code	BT-AP07141
Host	Rabbit
Isotype	IgG
Size	20ul, 50ul, 100ul
Immunogen	Recombinant Protein of PI 3-kinase p85 α
Mol wt	83598
Species reactivity	Human
Clonality	Polyclonal
Recommended application	WB
Concentration	1 mg/ml
Full name	PI 3-kinase p85alpha Antibody
Synonyms	PIK3R1; GRB1; Phosphatidylinositol 3-kinase regulatory subunit alpha; PI3-kinase regulatory subunit alpha; PI3K regulatory subunit alpha; PtdIns-3-kinase regulatory subunit alpha; Phosphatidylinositol

This product is for research use only, not for use in human, therapeutic or diagnostic procedure.

Background

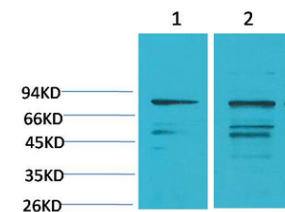
Phosphatidylinositol 3-kinase phosphorylates the inositol ring of phosphatidylinositol at the 3-prime position. The enzyme comprises a 110 kD catalytic subunit and a regulatory subunit of either 85, 55, or 50 kD. PIK3R1 encodes the 85 kD regulatory subunit. Phosphatidylinositol 3-kinase plays an important role in the metabolic actions of insulin, and a mutation in PIK3R1 has been associated with insulin resistance. Alternative splicing of PIK3R1 results in four transcript variants encoding different isoforms.

Recommended Dilution

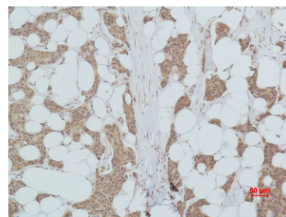
WB: 1: 1000 - 2000

Not yet tested in other applications.

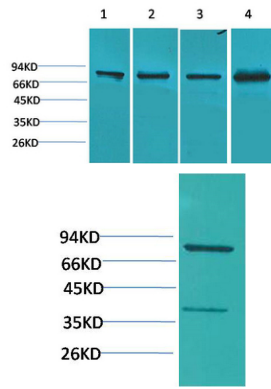
Images



Western blot analysis of 1) HepG2, 2) 293T using PI 3-kinase p85 α Polyclonal Antibody. Secondary antibody was diluted at 1:20000



Immunohistochemical analysis of paraffin-embedded human Breast carcinoma using PI 3-kinase p85 α Polyclonal Antibody.



Western blot analysis of 1) 3T3, 2) Raw264.7, 3) Rat Kidney Tissue, 4) Rat Liver Tissue using PI 3-kinase p85 α Polyclonal Antibody. Secondary antibody was diluted at 1:20000

Western blot analysis of HepG2 using PI 3-kinase p85 α Polyclonal Antibody. Secondary antibody was diluted at 1:20000

Storage

-20°C for one year

501 Changsheng S Rd, Nanhu Dist, Jiaxing, Zhejiang, China

Tel: 86 21 31007137 | E-mail: save@bt-laboratory.com | www.bt-laboratory.com