

## PI 3-kinase p85 Beta Polyclonal Antibody

### Description

<b>Product type</b>	Primary Antibody
<b>Code</b>	BT-AP07147
<b>Host</b>	Rabbit
<b>Isotype</b>	IgG
<b>Size</b>	20ul, 50ul, 100ul
<b>Immunogen</b>	The antiserum was produced against synthesized peptide derived from human PI 3-kinase p85beta. AA range:409-458
<b>Mol wt</b>	81624
<b>Species reactivity</b>	Human, Mouse, Rat
<b>Clonality</b>	Polyclonal
<b>Recommended application</b>	WB, ELISA
<b>Concentration</b>	1 mg/ml
<b>Full name</b>	PI 3-kinase p85beta Antibody
<b>Synonyms</b>	PIK3R2; Phosphatidylinositol 3-kinase regulatory subunit beta; PI3-kinase regulatory subunit beta; PI3K regulatory subunit beta; PtdIns-3-kinase regulatory subunit beta; Phosphatidylinositol 3-kinase

**This product is for research use only, not for use in human, therapeutic or diagnostic procedure.**

### Background

Phosphatidylinositol 3-kinase (PI3K) is a lipid kinase that phosphorylates phosphatidylinositol and similar compounds, creating second messengers important in growth signaling pathways. PI3K functions as a heterodimer of a regulatory and a catalytic subunit. Phosphoinositide-3-kinase regulatory subunit 2 encoded by PIK3R2 is a regulatory component of PI3K. Two transcript variants, one protein coding and the other non-protein coding, have been found for PIK3R2.

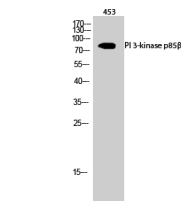
### Recommended Dilution

WB: 1: 500 - 1: 2000

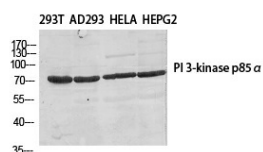
ELISA: 1: 10000

Not yet tested in other applications.

### Images




Western Blot analysis of 453 cells using PI 3-kinase p85 $\beta$  Polyclonal Antibody diluted at 1:500



Western Blot analysis of various cells using PI 3-kinase p85 $\beta$  Polyclonal Antibody diluted at 1:500

PI 3-kinase  
p85 $\beta$ -



-117  
-85  
-49  
-34  
-25  
-19

Western blot analysis of lysate from Jurkat cells, using PI 3-kinase p85 $\beta$  antibody.

### Storage

-20°C for one year

501 Changsheng S Rd, Nanhu Dist, Jiaxing, Zhejiang, China

Tel: 86 21 31007137 | E-mail: [save@bt-laboratory.com](mailto:save@bt-laboratory.com) | [www.bt-laboratory.com](http://www.bt-laboratory.com)