

PI-9 Polyclonal Antibody

Description

Product type	Primary Antibody
Code	BT-AP07155
Host	Rabbit
Isotype	IgG
Size	20ul, 50ul, 100ul
Immunogen	The antiserum was produced against synthesized peptide derived from human SERPINB9. AA range:241-290
Mol wt	42404
Species reactivity	Human, Mouse, Rat
Clonality	Polyclonal
Recommended application	WB, IHC-p, ELISA
Concentration	1 mg/ml
Full name	PI-9 Antibody
Synonyms	SERPINB9; PI9; Serpin B9; Cytoplasmic antiproteinase 3; CAP-3; CAP3; Peptidase inhibitor 9; PI-9

This product is for research use only, not for use in human, therapeutic or diagnostic procedure.

Background

SERPINB9 encodes a member of the serine protease inhibitor family which are also known as serpins. The encoded protein belongs to a subfamily of intracellular serpins. Serpin family B member 9 inhibits the activity of the effector molecule granzyme B. Overexpression of serpin family B member 9 may prevent cytotoxic T-lymphocytes from eliminating certain tumor cells. A pseudogene of SERPINB9 is found on chromosome 6.

Recommended Dilution

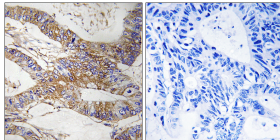
WB: 1: 500 - 1: 2000

IHC: 1: 100 - 1: 300

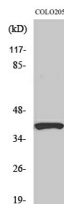
ELISA: 1: 20000

Not yet tested in other applications.

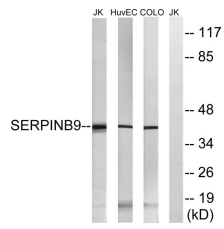
Images



Immunohistochemistry analysis of paraffin-embedded human colon carcinoma tissue, using SERPINB9 Antibody. The picture on the right is blocked with the synthesized peptide.



Western Blot analysis of various cells using PI-9 Polyclonal Antibody diluted at 1:1000



Storage

-20°C for one year

501 Changsheng S Rd, Nanhu Dist, Jiaxing, Zhejiang, China

Tel: 86 21 31007137 | E-mail: save@bt-laboratory.com | www.bt-laboratory.com