

PIG3 Polyclonal Antibody

Description

Product type	Primary Antibody
Code	BT-AP07165
Host	Rabbit
Isotype	IgG
Size	20ul, 50ul, 100ul
Immunogen	The antiserum was produced against synthesized peptide derived from human QORX. AA range:241-290
Mol wt	35536
Species reactivity	Human
Clonality	Polyclonal
Recommended application	WB, IHC-p, ELISA
Concentration	1 mg/ml
Full name	PIG3 Antibody
Synonyms	TP53I3; PIG3; Quinone oxidoreductase PIG3; Tumor protein p53-inducible protein 3; p53-induced gene 3 protein

This product is for research use only, not for use in human, therapeutic or diagnostic procedure.

Background

Tumor protein p53 inducible protein 3 encoded by TP53I3 is similar to oxidoreductases, which are enzymes involved in cellular responses to oxidative stresses and irradiation. TP53I3 is induced by the tumor suppressor p53 and is thought to be involved in p53-mediated cell death. It contains a p53 consensus binding site in its promoter region and a downstream pentanucleotide microsatellite sequence. P53 has been shown to transcriptionally activate TP53I3 by interacting with the downstream pentanucleotide microsatellite sequence. The microsatellite is polymorphic, with a varying number of pentanucleotide repeats directly correlated with the extent of transcriptional activation by p53. It has been suggested that the microsatellite polymorphism may be associated with differential susceptibility to cancer. Alternatively spliced transcript variants encoding different isoforms have been found for TP53I3.

Recommended Dilution

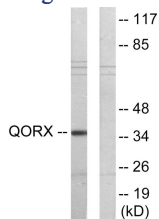
WB: 1: 500 - 1: 2000

IHC: 1: 100 - 1: 300

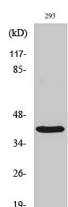
ELISA: 1: 20000

Not yet tested in other applications.

Images



Western blot analysis of lysates from 293 cells, using QORX Antibody. The lane on the right is blocked with the synthesized peptide.



Western Blot analysis of various cells using PIG3 Polyclonal Antibody

Storage

-20°C for one year

501 Changsheng S Rd, Nanhu Dist, Jiaxing, Zhejiang, China

Tel: 86 21 31007137 | E-mail: save@bt-laboratory.com | www.bt-laboratory.com