

Cav2.2 Polyclonal Antibody

Description

Product type	Primary Antibody
Code	BT-AP07166
Host	Rabbit
Isotype	IgG
Size	20ul, 50ul, 100ul
Immunogen	Synthetic Peptide of Cav2.2
Mol wt	N/A
Species reactivity	Human, Rat, Mouse
Clonality	Polyclonal
Recommended application	IHC-p, IF
Concentration	1 mg/ml
Full name	Voltage-dependent N-type calcium channel subunit alpha-1B
Synonyms	Voltage-dependent N-type calcium channel subunit alpha-1B ;Brain calcium channel III;BIII;Calcium channel, L type, alpha-1 polypeptide isoform 5;Voltage-gated calcium channel subunit alpha Cav2.; Voltage-dependent N-type calcium channel subunit alpha-1B; Brain calcium channel III; BIII; Calcium channel, L type, alpha-1 polypeptide isoform 5; Voltage-gated calcium channel subunit alpha Cav2.2

This product is for research use only, not for use in human, therapeutic or diagnostic procedure.

Background

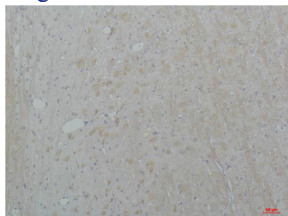
The protein encoded by this gene is the pore-forming subunit of an N-type voltage-dependent calcium channel, which controls neurotransmitter release from neurons. The encoded protein forms a complex with alpha-2, beta, and delta subunits to form the high-voltage activated channel. This channel is sensitive to omega-conotoxin-GVIA and omega-agatoxin-IIIa but insensitive to dihydropyridines. Two transcript variants encoding different isoforms have been found for this gene.

Recommended Dilution

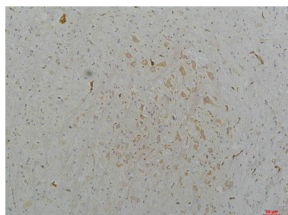
IHC: 1: 50 - 100

Not yet tested in other applications.

Images



Immunohistochemical analysis of paraffin-embedded Rat Brain Tissue using Cav2.2Rabbit pAb diluted at 1:200.



Immunohistochemical analysis of paraffin-embedded Mouse Brain Tissue using Cav2.2Rabbit pAb diluted at 1:200.

Storage

-20°C for 1 year

501 Changsheng S Rd, Nanhu Dist, Jiaxing, Zhejiang, China

Tel: 86 21 31007137 | E-mail: save@bt-laboratory.com | www.bt-laboratory.com