

CaV alpha2delta1 Polyclonal Antibody

Description

Product type	Primary Antibody
Code	BT-AP07172
Host	Rabbit
Isotype	IgG
Size	20ul, 50ul, 100ul
Immunogen	Synthetic Peptide of CaV α 2 δ 1
Mol wt	N/A
Species reactivity	Rat
Clonality	Polyclonal
Recommended application	WB, IHC-p, IF
Concentration	1 mg/ml
Full name	Voltage-dependent calcium channel subunit alpha-2/delta-1
Synonyms	Voltage-dependent calcium channel subunit alpha-2/delta-1 ;Voltage-gated calcium channel subunit alpha-2/delta-1 [Cleaved into: Voltage-dependent calcium channel subunit alpha-2-1; Voltage-dependent ; Voltage-dependent calcium channel subunit alpha-2/delta-1; Voltage-gated calcium channel subunit alpha-2/delta-1; Voltage-dependent calcium channel subunit alpha-2-1; Voltage-dependent calcium channel subunit delta-1;

This product is for research use only, not for use in human, therapeutic or diagnostic procedure.

Background

The preproprotein encoded by this gene is cleaved into multiple chains that comprise the alpha-2 and delta subunits of the voltage-dependent calcium channel complex. Calcium channels mediate the influx of calcium ions into the cell upon membrane polarization. Mutations in this gene can cause cardiac deficiencies, including Brugada syndrome and short QT syndrome. Alternate splicing results in multiple transcript variants, some of which may lack the delta subunit portion.

Recommended Dilution

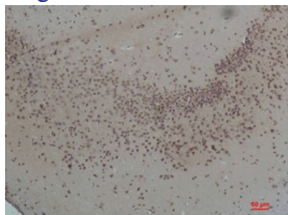
WB: 1: 500 - 1: 2000

IHC-p: 1: 100 - 1: 300

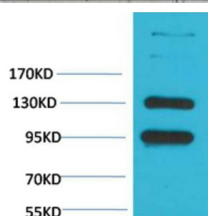
ELISA: 1: 40000

Not yet tested in other applications.

Images



Immunohistochemical analysis of paraffin-embedded Rat Brain Tissue using CaV α 2 δ 1 Rabbit pAb diluted at 1:200.



Western blot analysis of Rat Brain Tissue with CaV α 2 δ 1 Rabbit pAb diluted at 1:2,000.

Storage

-20°C for 1 year

501 Changsheng S Rd, Nanhu Dist, Jiaxing, Zhejiang, China

Tel: 86 21 31007137 | E-mail: save@bt-laboratory.com | www.bt-laboratory.com