

## CaV $\alpha$ 2 $\delta$ 2 Polyclonal Antibody

### Description

Product type	Primary Antibody
Code	BT-AP07173
Host	Rabbit
Isotype	IgG
Size	20ul, 50ul, 100ul
Immunogen	Synthetic Peptide of CaV $\alpha$ 2 $\delta$ 2
Mol wt	N/A
Species reactivity	Human, Rat, Mouse
Clonality	Polyclonal
Recommended application	WB, IHC-p, IF
Concentration	1 mg/ml
Full name	Voltage-dependent calcium channel subunit alpha-2/delta-2
Synonyms	Voltage-dependent calcium channel subunit alpha-2/delta-2 ;Voltage-gated calcium channel subunit alpha-2/delta-2 [Cleaved into: Voltage-dependent calcium channel subunit alpha-2-2; Voltage-dependent ; Voltage-dependent calcium channel subunit alpha-2/delta-2; Voltage-gated calcium channel subunit alpha-2/delta-2; Voltage-dependent calcium channel subunit alpha-2-2; Voltage-dependent calcium channel subunit delta-2;

**This product is for research use only, not for use in human, therapeutic or diagnostic procedure.**

### Background

Calcium channels mediate the entry of calcium ions into the cell upon membrane polarization. This gene encodes the alpha-2/delta subunit of the voltage-dependent calcium channel complex. The complex consists of the main channel-forming subunit alpha-1, and auxiliary subunits alpha-2/delta, beta, and gamma. The auxiliary subunits function in the assembly and membrane localization of the complex, and modulate calcium currents and channel activation/inactivation kinetics. The subunit encoded by this gene undergoes post-translational cleavage to yield the extracellular alpha2 peptide and a membrane-anchored delta polypeptide. This subunit is a receptor for the antiepileptic drug, gabapentin. Mutations in this gene are associated with early infantile epileptic encephalopathy. Single nucleotide polymorphisms in this gene are correlated with increased sensitivity to

### Recommended Dilution

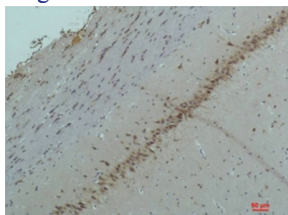
WB: 1: 500 - 1: 2000

IHC-p: 1: 100 - 1: 300

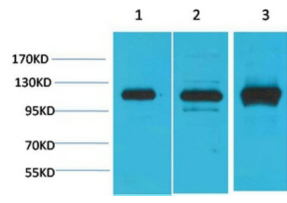
ELISA: 1: 40000

Not yet tested in other applications.

### Images



Immunohistochemical analysis of paraffin-embedded Rat Brain Tissue using CaV  $\alpha$ 2 $\delta$ 2 Rabbit pAb diluted at 1:200.



Western blot analysis of 1)293T, 2)Mouse Brain Tissue, 3) Rat Brain Tissue with CABP2 Rabbit pAb diluted at 1:2,000.

### Storage

-20°C for 1 year

501 Changsheng S Rd, Nanhu Dist, Jiaxing, Zhejiang, China

Tel: 86 21 31007137 | E-mail: [save@bt-laboratory.com](mailto:save@bt-laboratory.com) | [www.bt-laboratory.com](http://www.bt-laboratory.com)