

PIG-Y Polyclonal Antibody

Description

Product type	Primary Antibody
Code	BT-AP07175
Host	Rabbit
Isotype	IgG
Size	20ul, 50ul, 100ul
Immunogen	The antiserum was produced against synthesized peptide derived from human PIGY. AA range:3-52
Mol wt	8058
Species reactivity	Human, Mouse
Clonality	Polyclonal
Recommended application	IHC-p, ELISA
Concentration	1 mg/ml
Full name	PIG-Y Antibody
Synonyms	PIGY; Phosphatidylinositol N-acetylglucosaminyltransferase subunit Y; Phosphatidylinositol-glycan biosynthesis class Y protein; PIG-Y

This product is for research use only, not for use in human, therapeutic or diagnostic procedure.

Background

The protein encoded by PIGY (phosphatidylinositol glycan anchor biosynthesis class Y) is part of the GPI-N-acetylglucosaminyltransferase (GPI-GnT) complex which initiates the biosynthesis of glycosylphosphatidylinositol (GPI). GPI is synthesized in the endoplasmic reticulum and serves as an anchor for many surface proteins. Proteins containing GPI anchors can have an important role in cell-cell interactions. The transcript for PIGY is bicistronic. The downstream open reading frame encodes this GPI-GnT complex protein, while the upstream open reading frame encodes a protein with unknown function, as represented by GeneID: 100996939.

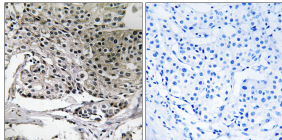
Recommended Dilution

IHC: 1: 100 - 1: 300

ELISA: 1: 20000

Not yet tested in other applications.

Images



Immunohistochemistry analysis of paraffin-embedded human breast carcinoma tissue, using PIGY Antibody. The picture on the right is blocked with the synthesized peptide.

Storage

-20°C for one year