

Pim-1 Polyclonal Antibody

Description

Product type	Primary Antibody
Code	BT-AP07177
Host	Rabbit
Isotype	IgG
Size	20ul, 50ul, 100ul
Immunogen	The antiserum was produced against synthesized peptide derived from human Pim-1. AA range:281-330
Mol wt	45412
Species reactivity	Human, Mouse, Rat
Clonality	Polyclonal
Recommended application	WB, ELISA
Concentration	1 mg/ml
Full name	Pim-1 Antibody
Synonyms	PIM1; Serine/threonine-protein kinase pim-1

This product is for research use only, not for use in human, therapeutic or diagnostic procedure.

Background

The protein encoded by PIM1 (Pim-1 proto-oncogene, serine/threonine kinase) belongs to the Ser/Thr protein kinase family, and PIM subfamily. PIM1 is expressed primarily in B-lymphoid and myeloid cell lines, and is overexpressed in hematopoietic malignancies and in prostate cancer. It plays a role in signal transduction in blood cells, contributing to both cell proliferation and survival, and thus provides a selective advantage in tumorigenesis. Both the human and orthologous mouse genes have been reported to encode two isoforms (with preferential cellular localization) resulting from the use of alternative in-frame translation initiation codons, the upstream non-AUG (CUG) and downstream AUG codons.

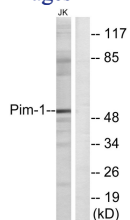
Recommended Dilution

WB: 1: 500 - 1: 2000

ELISA: 1: 20000

Not yet tested in other applications.

Images



Western blot analysis of lysates from Jurkat cells, using Pim-1 Antibody. The lane on the right is blocked with the synthesized peptide.

Storage

-20°C for one year