

PIP5K1C Gamma Polyclonal Antibody

Description

Product type	Primary Antibody
Code	BT-AP07186
Host	Rabbit
Isotype	IgG
Size	20ul, 50ul, 100ul
Immunogen	The antiserum was produced against synthesized peptide derived from human PIP5K1C. AA range:305-354
Mol wt	73260
Species reactivity	Human
Clonality	Polyclonal
Recommended application	WB, ELISA
Concentration	1 mg/ml
Full name	PIP5K1C gamma Antibody
Synonyms	PIP5K1C; KIAA0589; Phosphatidylinositol 4-phosphate 5-kinase type-1 gamma; PIP5K1-gamma; PtdIns(4)P-5-kinase 1 gamma; Phosphatidylinositol 4-phosphate 5-kinase type I gamma; PIP5KIgamma

This product is for research use only, not for use in human, therapeutic or diagnostic procedure.

Background

This locus encodes a type I phosphatidylinositol 4-phosphate 5-kinase. Phosphatidylinositol-4-phosphate 5-kinase type 1 gamma catalyzes phosphorylation of phosphatidylinositol 4-phosphate, producing phosphatidylinositol 4,5-bisphosphate. Phosphatidylinositol-4-phosphate 5-kinase type 1 gamma is found at synapses and has been found to play roles in endocytosis and cell migration. Mutations at this locus have been associated with lethal congenital contractural syndrome. Alternatively spliced transcript variants encoding different isoforms have been described.

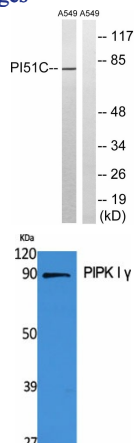
Recommended Dilution

WB: 1: 500 - 1: 2000

ELISA: 1: 20000

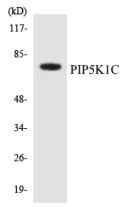
Not yet tested in other applications.

Images



Western blot analysis of lysates from A549 cells, using PIP5K1C Antibody. The lane on the right is blocked with the synthesized peptide.

Western Blot analysis of various cells using PIP5K1C Polyclonal Antibody



Western blot analysis of the lysates from HepG2 cells using PIP5K1C antibody.



Western Blot analysis of A549 cells using PIPK I γ Polyclonal Antibody

Storage

-20°C for one year

501 Changsheng S Rd, Nanhu Dist, Jiaxing, Zhejiang, China

Tel: 86 21 31007137 | E-mail: save@bt-laboratory.com | www.bt-laboratory.com