

PIPOX Polyclonal Antibody

Description

Product type	Primary Antibody
Code	BT-AP07187
Host	Rabbit
Isotype	IgG
Size	20ul, 50ul, 100ul
Immunogen	The antiserum was produced against synthesized peptide derived from human PIPOX. AA range:257-306
Mol wt	44066
Species reactivity	Human
Clonality	Polyclonal
Recommended application	WB, ELISA
Concentration	1 mg/ml
Full name	PIPOX Antibody
Synonyms	PIPOX; LPIPOX; PSO; Peroxisomal sarcosine oxidase; PSO; L-pipecolate oxidase; L-pipecolic acid oxidase

This product is for research use only, not for use in human, therapeutic or diagnostic procedure.

Background

PIPOX (Pipecolic Acid And Sarcosine Oxidase) is a Protein Coding gene. Diseases associated with PIPOX include peroxisomal biogenesis disorders. Among its related pathways are Glycine, serine and threonine metabolism and Lysine degradation. GO annotations related to this gene include receptor binding and sarcosine oxidase activity.

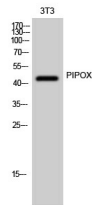
Recommended Dilution

WB: 1: 500 - 1: 2000

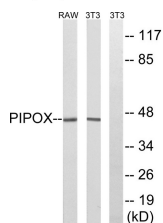
ELISA: 1: 5000

Not yet tested in other applications.

Images



Western Blot analysis of 3T3 cells using PIPOX Polyclonal Antibody



Western blot analysis of lysates from NIH/3T3 and RAW264.7 cells, using PIPOX Antibody. The lane on the right is blocked with the synthesized peptide.

Storage

-20°C for one year

501 Changsheng S Rd, Nanhu Dist, Jiaxing, Zhejiang, China

Tel: 86 21 31007137 | E-mail: save@bt-laboratory.com | www.bt-laboratory.com