

PITSLRE Polyclonal Antibody

Description

Product type	Primary Antibody
Code	BT-AP07190
Host	Rabbit
Isotype	IgG
Size	20ul, 50ul, 100ul
Immunogen	The antiserum was produced against synthesized peptide derived from human CDC2L1. AA range:10-59
Mol wt	92707
Species reactivity	Human, Mouse
Clonality	Polyclonal
Recommended application	WB, IHC-p, ELISA
Concentration	1 mg/ml
Full name	PITSLRE Antibody
Synonyms	CDK11B; CDC2L1; CDK11; PITSLREA; PK58; Cyclin-dependent kinase 11B; Cell division cycle 2-like protein kinase 1; CLK-1; Cell division protein kinase 11B; Galactosyltransferase-associated protein kinas

This product is for research use only, not for use in human, therapeutic or diagnostic procedure.

Background

CDK11B encodes a member of the serine/threonine protein kinase family. Members of this kinase family are known to be essential for eukaryotic cell cycle control. Due to a segmental duplication, CDK11B shares very high sequence identity with a neighboring gene. These two genes are frequently deleted or altered in neuroblastoma. Cyclin dependent kinase 11B encoded by CDK11B can be cleaved by caspases and may play a role in cell apoptosis. Alternative splicing results in multiple transcript variants.

Recommended Dilution

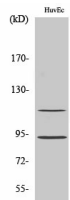
WB: 1: 500 - 1: 2000

IHC: 1: 100 - 1: 300

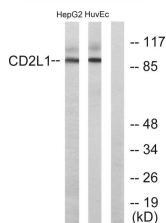
ELISA: 1: 20000

Not yet tested in other applications.

Images



Western Blot analysis of various cells using PITSLRE Polyclonal Antibody



Western blot analysis of lysates from HUVEC and HepG2 cells, using CDC2L1 Antibody. The lane on the right is blocked with the synthesized peptide.

Storage

-20°C for one year

501 Changsheng S Rd, Nanhu Dist, Jiaxing, Zhejiang, China

Tel: 86 21 31007137 | E-mail: save@bt-laboratory.com | www.bt-laboratory.com