

PIXBeta Polyclonal Antibody

Description

Product type	Primary Antibody
Code	BT-AP07193
Host	Rabbit
Isotype	IgG
Size	20ul, 50ul, 100ul
Immunogen	The antiserum was produced against synthesized peptide derived from human ARHGEF7. AA range:311-360
Mol wt	90012
Species reactivity	Human, Mouse, Rat
Clonality	Polyclonal
Recommended application	WB, IHC-p, ELISA
Concentration	1 mg/ml
Full name	PIXbeta Antibody
Synonyms	ARHGEF7; COOL1; KIAA0142; P85SPR; PAK3BP; PIXB; Nbla10314; Rho guanine nucleotide exchange factor 7; Beta-Pix; COOL-1; PAK-interacting exchange factor beta; p85

This product is for research use only, not for use in human, therapeutic or diagnostic procedure.

Background

ARHGEF7 (Rho guanine nucleotide exchange factor 7) encodes a protein that belongs to a family of cytoplasmic proteins that activate the Ras-like family of Rho proteins by exchanging bound GDP for GTP. It forms a complex with the small GTP binding protein Rac1 and recruits Rac1 to membrane ruffles and to focal adhesions. Multiple alternatively spliced transcript variants encoding different isoforms have been observed for ARHGEF7.

Recommended Dilution

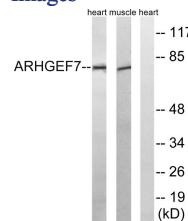
WB: 1: 500 - 1: 2000

IHC: 1: 100 - 1: 300

ELISA: 1: 5000

Not yet tested in other applications.

Images



Western blot analysis of lysates from rat muscle and rat heart cells, using ARHGEF7 Antibody. The lane on the right is blocked with the synthesized peptide.

Storage

-20°C for one year