

CBX8 Polyclonal Antibody

Description

Product type	Primary Antibody
Code	BT-AP07198
Host	Rabbit
Isotype	IgG
Size	20ul, 50ul, 100ul
Immunogen	Synthesized peptide derived from human protein . at AA range: 140-220
Mol wt	N/A
Species reactivity	Human, Mouse
Clonality	Polyclonal
Recommended application	WB, ELISA
Concentration	1 mg/ml
Full name	Chromobox protein homolog 8
Synonyms	Chromobox protein homolog 8 ;Polycomb 3 homolog:Pc3;hPc3;Rectachrome 1

This product is for research use only, not for use in human, therapeutic or diagnostic procedure.

Background

Component of the Polycomb group (PcG) multiprotein PRC1 complex, a complex required to maintain the transcriptionally repressive state of many genes, including Hox genes, throughout development. PcG PRC1 complex acts via chromatin remodeling and modification of histones; it mediates monoubiquitination of histone H2A 'Lys-119', rendering chromatin heritably changed in its expressibility..Contains 1 chromo domain.,subunit:Component of chromatin-associated class II polycomb repressive complex 1 (PRC1/hPRC-H) at least composed of PCGF2/RNF110, BMI1/PCGF4, CBX2/M33, CBX4/PC2, CBX8/PC3, PHC1, PHC2, PHC3, SCMH1, RING1 and RNF2/RING2. Interacts with MLLT3.,

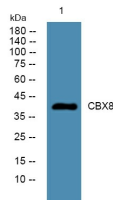
Recommended Dilution

WB: 1: 500 - 1: 2000

ELISA: 1: 5000 - 1: 20000

Not yet tested in other applications.

Images



Western blot analysis of lysates from K562 cells, primary antibody was diluted at 1:1000, 4°C overnight

Storage

-20°C for 1 year