

PKA I Beta reg Polyclonal Antibody

Description

Product type	Primary Antibody
Code	BT-AP07202
Host	Rabbit
Isotype	IgG
Size	20ul, 50ul, 100ul
Immunogen	The antiserum was produced against synthesized peptide derived from human KAP1. AA range:106-155
Mol wt	43158
Species reactivity	Human, Mouse, Rat
Clonality	Polyclonal
Recommended application	WB, IHC-p, ELISA
Concentration	1 mg/ml
Full name	PKA Ibeta reg Antibody
Synonyms	PRKAR1B; cAMP-dependent protein kinase type I-beta regulatory subunit

This product is for research use only, not for use in human, therapeutic or diagnostic procedure.

Background

Protein kinase cAMP-dependent type I regulatory subunit beta encoded by PRKAR1B.

Recommended Dilution

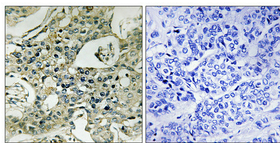
WB: 1: 500 - 1: 2000

IHC: 1: 100 - 1: 300

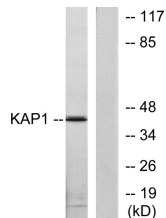
ELISA: 1: 20000

Not yet tested in other applications.

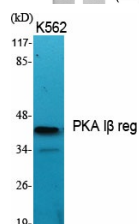
Images



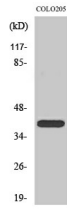
Immunohistochemical analysis of paraffin-embedded Human breast cancer. Antibody was diluted at 1:100(4° overnight). High-pressure and temperature Tris-EDTA,pH8.0 was used for antigen retrieval. Negative contrl (right) obtained from antibody was pre-absorbed by immunogen peptide.



Western blot analysis of lysates from COLO205 cells, using KAP1 Antibody. The lane on the right is blocked with the synthesized peptide.



Western Blot analysis of various cells using PKA Iβ reg Polyclonal Antibody



Western Blot analysis of COLO205 cells using PKA I β reg Polyclonal Antibody

Storage

-20°C for one year

501 Changsheng S Rd, Nanhu Dist, Jiaxing, Zhejiang, China

Tel: 86 21 31007137 | E-mail: save@bt-laboratory.com | www.bt-laboratory.com