

PKA Alpha/Beta/Gamma cat Polyclonal Antibody

Description

Product type	Primary Antibody
Code	BT-AP07204
Host	Rabbit
Isotype	IgG
Size	20ul, 50ul, 100ul
Immunogen	The antiserum was produced against synthesized peptide derived from human PKA alpha/beta CAT. AA range:166-215
Mol wt	40590
Species reactivity	Human, Mouse, Rat
Clonality	Polyclonal
Recommended application	WB, IHC-p, IF, ELISA
Concentration	1 mg/ml
Full name	PKAalpha/beta/gamma cat Antibody
Synonyms	PRKACA; PKACA; cAMP-dependent protein kinase catalytic subunit alpha; PKA C-alpha; PRKACB; cAMP-dependent protein kinase catalytic subunit beta; PKA C-beta; PRKACG; cAMP-dependent protein kinase catal

This product is for research use only, not for use in human, therapeutic or diagnostic procedure.

Background

PRKACA encodes one of the catalytic subunits of protein kinase A, which exists as a tetrameric holoenzyme with two regulatory subunits and two catalytic subunits, in its inactive form. cAMP causes the dissociation of the inactive holoenzyme into a dimer of regulatory subunits bound to four cAMP and two free monomeric catalytic subunits. Four different regulatory subunits and three catalytic subunits have been identified in humans. cAMP-dependent phosphorylation of proteins by protein kinase A is important to many cellular processes, including differentiation, proliferation, and apoptosis. Constitutive activation of PRKACA caused either by somatic mutations, or genomic duplications of regions that include PRKACA, have been associated with hyperplasias and adenomas of the adrenal cortex and are linked to corticotropin-independent Cushing's syndrome. Alternative splicing results in multiple transcript variants encoding different isoforms. Tissue-specific isoforms that differ at the N-terminus have been described, and these isoforms may differ in the post-translational modifications that occur at the N-terminus of some isoforms.

Recommended Dilution

WB: 1: 500 - 1: 2000

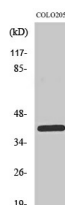
IHC: 1: 100 - 1: 300

IF: 1: 200 - 1: 1000

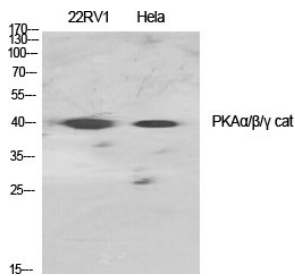
ELISA: 1: 20000

Not yet tested in other applications.

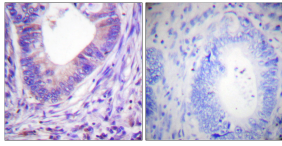
Images



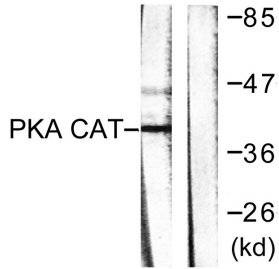
Western Blot analysis of COLO205 cells using PKAα/β/γ cat Polyclonal Antibody diluted at 1:1000



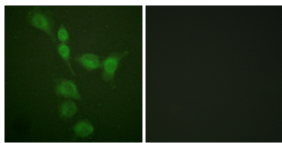
Western Blot analysis of various cells using PKA $\alpha/\beta/\gamma$ cat Polyclonal Antibody diluted at 1:1000



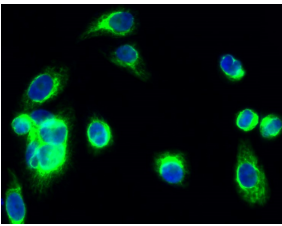
Immunohistochemistry analysis of paraffin-embedded human colon carcinoma tissue, using PKA alpha/beta CAT Antibody. The picture on the right is blocked with the synthesized peptide.



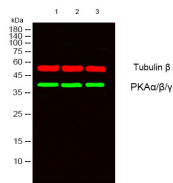
Western blot analysis of lysates from mouse brain, using PKA alpha/beta CAT Antibody. The lane on the right is blocked with the synthesized peptide.



Immunofluorescence analysis of A549 cells, using PKA alpha/beta CAT Antibody. The picture on the right is blocked with the synthesized peptide.



Immunofluorescence analysis of HeLa cell. 1. PKA $\alpha/\beta/\gamma$ cat Polyclonal Antibody (green) was diluted at 1:200 (4 $^{\circ}$ overnight). 2. Goat Anti Rabbit Alexa Fluor 488 was diluted at 1:1000 (room temperature, 50min). 3. DAPI (blue) 10min.



Storage

-20 $^{\circ}$ C for one year

501 Changsheng S Rd, Nanhu Dist, Jiaxing, Zhejiang, China

Tel: 86 21 31007137 | E-mail: save@bt-laboratory.com | www.bt-laboratory.com