

## PKA Beta cat Polyclonal Antibody

### Description

<b>Product type</b>	Primary Antibody
<b>Code</b>	BT-AP07205
<b>Host</b>	Rabbit
<b>Isotype</b>	IgG
<b>Size</b>	20ul, 50ul, 100ul
<b>Immunogen</b>	The antiserum was produced against synthesized peptide derived from human KAPCB. AA range:291-340
<b>Mol wt</b>	40623
<b>Species reactivity</b>	Human, Mouse, Rat
<b>Clonality</b>	Polyclonal
<b>Recommended application</b>	WB, IHC-p, ELISA
<b>Concentration</b>	1 mg/ml
<b>Full name</b>	PKAbeta cat Antibody
<b>Synonyms</b>	PRKACB; cAMP-dependent protein kinase catalytic subunit beta; PKA C-beta

This product is for research use only, not for use in human, therapeutic or diagnostic procedure.

### Background

The protein encoded by PRKACB (protein kinase cAMP-activated catalytic subunit beta) is a member of the serine/threonine protein kinase family. The encoded protein is a catalytic subunit of cAMP (cyclic AMP)-dependent protein kinase, which mediates signalling through cAMP. cAMP signaling is important to a number of processes, including cell proliferation and differentiation. Multiple alternatively spliced transcript variants encoding distinct isoforms have been observed.

### Recommended Dilution

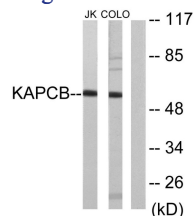
WB: 1: 500 - 1: 2000

IHC: 1: 100 - 1: 300

ELISA: 1: 20000

Not yet tested in other applications.

### Images



Western blot analysis of lysates from Jurkat and COLO205 cells, using KAPCB Antibody. The lane on the right is blocked with the synthesized peptide.

### Storage

-20°C for one year