

PKA Gamma cat Polyclonal Antibody

Description

Product type	Primary Antibody
Code	BT-AP07206
Host	Rabbit
Isotype	IgG
Size	20ul, 50ul, 100ul
Immunogen	The antiserum was produced against synthesized peptide derived from human KAPCG. AA range:1-50
Mol wt	40434
Species reactivity	Human
Clonality	Polyclonal
Recommended application	WB, IHC-p, ELISA
Concentration	1 mg/ml
Full name	PKA gamma cat Antibody
Synonyms	PRKACG; cAMP-dependent protein kinase catalytic subunit gamma; PKA C-gamma

This product is for research use only, not for use in human, therapeutic or diagnostic procedure.

Background

Cyclic AMP-dependent protein kinase (PKA) consists of two catalytic subunits and a regulatory subunit dimer. PRKACG (protein kinase cAMP-activated catalytic subunit gamma) encodes the gamma form of its catalytic subunit. PRKACG is intronless and is thought to be a retrotransposon derived from the gene for the alpha form of the PKA catalytic subunit.

Recommended Dilution

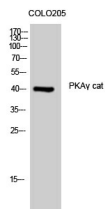
WB: 1: 500 - 1: 2000

IHC: 1: 100 - 1: 300

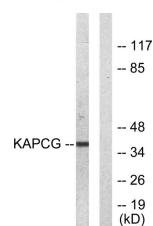
ELISA: 1: 10000

Not yet tested in other applications.

Images



Western Blot analysis of COLO205 cells using PKA γ cat Polyclonal Antibody



Western blot analysis of lysates from COLO205 cells, using KAPCG Antibody. The lane on the right is blocked with the synthesized peptide.

Storage

-20°C for one year

501 Changsheng S Rd, Nanhu Dist, Jiaxing, Zhejiang, China

Tel: 86 21 31007137 | E-mail: save@bt-laboratory.com | www.bt-laboratory.com