

PKC Delta Polyclonal Antibody

Description

Product type	Primary Antibody
Code	BT-AP07218
Host	Rabbit
Isotype	IgG
Size	20ul, 50ul, 100ul
Immunogen	The antiserum was produced against synthesized peptide derived from human PKC delta. AA range:471-520
Mol wt	77477
Species reactivity	Human, Mouse, Rat
Clonality	Polyclonal
Recommended application	WB, IHC-p, ELISA
Concentration	1 mg/ml
Full name	PKC delta Antibody
Synonyms	PRKCD; Protein kinase C delta type; Tyrosine-protein kinase PRKCD; nPKC-delta

This product is for research use only, not for use in human, therapeutic or diagnostic procedure.

Background

Protein kinase C (PKC) is a family of serine- and threonine-specific protein kinases that can be activated by calcium and the second messenger diacylglycerol. PKC family members phosphorylate a wide variety of protein targets and are known to be involved in diverse cellular signaling pathways. PKC family members also serve as major receptors for phorbol esters, a class of tumor promoters. Each member of the PKC family has a specific expression profile and is believed to play distinct roles in cells. Protein kinase C delta by PRKCD is one of the PKC family members. Studies both in human and mice demonstrate that this kinase is involved in B cell signaling and in the regulation of growth, apoptosis, and differentiation of a variety of cell types. Alternatively spliced transcript variants encoding the same protein have been observed.

Recommended Dilution

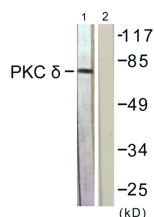
WB: 1: 500 - 1: 2000

IHC: 1: 100 - 1: 300

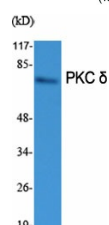
ELISA: 1: 5000

Not yet tested in other applications.

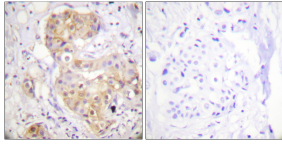
Images



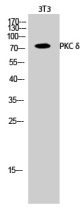
Western blot analysis of lysates from NIH/3T3 cells, treated with UV 15', using PKC delta Antibody. The lane on the right is blocked with the synthesized peptide.



Western Blot analysis of various cells using PKC δ Polyclonal Antibody diluted at 1:1000



Immunohistochemistry analysis of paraffin-embedded human breast carcinoma tissue, using PKC delta Antibody. The picture on the right is blocked with the synthesized peptide.



Western Blot analysis of 3T3 cells using PKC δ Polyclonal Antibody diluted at 1:1000

Storage

-20°C for one year

501 Changsheng S Rd, Nanhu Dist, Jiaxing, Zhejiang, China

Tel: 86 21 31007137 | E-mail: save@bt-laboratory.com | www.bt-laboratory.com