

PKC Epsilon Polyclonal Antibody

Description

Product type	Primary Antibody
Code	BT-AP07219
Host	Rabbit
Isotype	IgG
Size	20ul, 50ul, 100ul
Immunogen	The antiserum was produced against synthesized peptide derived from human PKC epsilon. AA range:688-737
Mol wt	83674
Species reactivity	Human, Mouse, Rat
Clonality	Polyclonal
Recommended application	WB, ELISA
Concentration	1 mg/ml
Full name	PKC epsilon Antibody
Synonyms	PRKCE; PKCE; Protein kinase C epsilon type; nPKC-epsilon

This product is for research use only, not for use in human, therapeutic or diagnostic procedure.

Background

Protein kinase C (PKC) is a family of serine- and threonine-specific protein kinases that can be activated by calcium and the second messenger diacylglycerol. PKC family members phosphorylate a wide variety of protein targets and are known to be involved in diverse cellular signaling pathways. PKC family members also serve as major receptors for phorbol esters, a class of tumor promoters. Each member of the PKC family has a specific expression profile and is believed to play a distinct role in cells. The protein encoded by PRKCE (protein kinase C epsilon) is one of the PKC family members. This kinase has been shown to be involved in many different cellular functions, such as neuron channel activation, apoptosis, cardioprotection from ischemia, heat shock response, as well as insulin exocytosis. Knockout studies in mice suggest that this kinase is important for lipopolysaccharide (LPS)-mediated signaling in activated macrophages and may also play a role in controlling anxiety-like behavior.

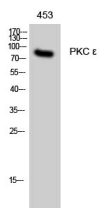
Recommended Dilution

WB: 1: 500 - 1: 2000

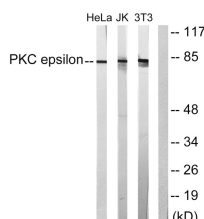
ELISA: 1: 5000

Not yet tested in other applications.

Images



Western Blot analysis of 453 cells using PKC ϵ Polyclonal Antibody diluted at 1:500



Western blot analysis of lysates from HeLa, Jurkat, and 3T3 cells, treated with PMA 125ng/ml 30', using PKC epsilon Antibody. The lane on the right is blocked with the synthesized peptide.

Storage

-20°C for one year

501 Changsheng S Rd, Nanhu Dist, Jiaxing, Zhejiang, China

Tel: 86 21 31007137 | E-mail: save@bt-laboratory.com | www.bt-laboratory.com