

PKC Zeta Polyclonal Antibody

Description

Product type	Primary Antibody
Code	BT-AP07221
Host	Rabbit
Isotype	IgG
Size	20ul, 50ul, 100ul
Immunogen	The antiserum was produced against synthesized peptide derived from human PKC zeta. AA range:526-575
Mol wt	67660
Species reactivity	Human, Mouse, Rat, Monkey
Clonality	Polyclonal
Recommended application	WB, IHC-p, IF, ELISA
Concentration	1 mg/ml
Full name	PKC zeta Antibody
Synonyms	PRKCZ; PKC2; Protein kinase C zeta type; nPKC-zeta

This product is for research use only, not for use in human, therapeutic or diagnostic procedure.

Background

Protein kinase C (PKC) zeta is a member of the PKC family of serine/threonine kinases which are involved in a variety of cellular processes such as proliferation, differentiation and secretion. Unlike the classical PKC isoenzymes which are calcium-dependent, PKC zeta exhibits a kinase activity which is independent of calcium and diacylglycerol but not of phosphatidylserine. Furthermore, it is insensitive to typical PKC inhibitors and cannot be activated by phorbol ester. Unlike the classical PKC isoenzymes, it has only a single zinc finger module. These structural and biochemical properties indicate that the zeta subspecies is related to, but distinct from other isoenzymes of PKC. Alternative splicing results in multiple transcript variants encoding different isoforms.

Recommended Dilution

WB: 1: 500 - 1: 2000

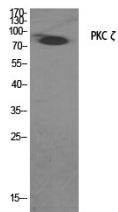
IHC: 1: 100 - 1: 300

IF: 1: 200 - 1: 1000

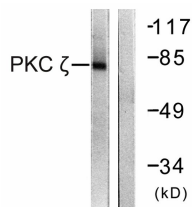
ELISA: 1: 5000

Not yet tested in other applications.

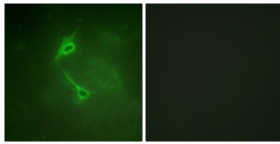
Images



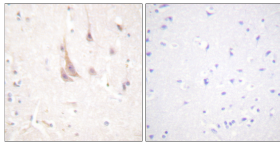
Western Blot analysis of various cells using PKC ζ Polyclonal Antibody diluted at 1:2000



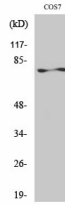
Western blot analysis of lysates from COS7 cells, treated with PMA 125ng/ml 30', using PKC zeta Antibody. The lane on the right is blocked with the synthesized peptide.



Immunofluorescence analysis of NIH/3T3 cells, using PKC zeta Antibody. The picture on the right is blocked with the synthesized peptide.



Immunohistochemistry analysis of paraffin-embedded human brain tissue, using PKC zeta Antibody. The picture on the right is blocked with the synthesized peptide.



Western Blot analysis of COS7 cells using PKC ζ Polyclonal Antibody diluted at 1:2000

Storage

-20°C for one year

501 Changsheng S Rd, Nanhu Dist, Jiaxing, Zhejiang, China

Tel: 86 21 31007137 | E-mail: save@bt-laboratory.com | www.bt-laboratory.com