

## Pki Alpha Polyclonal Antibody

### Description

Product type	Primary Antibody
Code	BT-AP07234
Host	Rabbit
Isotype	IgG
Size	20ul, 50ul, 100ul
Immunogen	The antiserum was produced against synthesized peptide derived from human IPKA. AA range:10-59
Mol wt	7989
Species reactivity	Human, Mouse, Rat
Clonality	Polyclonal
Recommended application	IHC-p, IF, ELISA
Concentration	1 mg/ml
Full name	Pki alpha Antibody
Synonyms	PKIA; PRKACN1; cAMP-dependent protein kinase inhibitor alpha; PKI-alpha; cAMP-dependent protein kinase inhibitor; muscle/brain isoform

This product is for research use only, not for use in human, therapeutic or diagnostic procedure.

### Background

The protein encoded by PKIA (protein kinase (cAMP-dependent, catalytic) inhibitor alpha) is a member of the cAMP-dependent protein kinase (PKA) inhibitor family. This protein was demonstrated to interact with and inhibit the activities of both C alpha and C beta catalytic subunits of the PKA. Alternatively spliced transcript variants encoding the same protein have been reported.

### Recommended Dilution

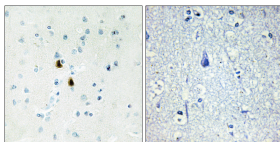
IHC: 1: 100 - 1: 300

IF: 1: 200 - 1: 1000

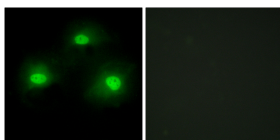
ELISA: 1: 20000

Not yet tested in other applications.

### Images



Immunohistochemistry analysis of paraffin-embedded human brain tissue, using IPKA Antibody. The picture on the right is blocked with the synthesized peptide.



Immunofluorescence analysis of HeLa cells, using IPKA Antibody. The picture on the right is blocked with the synthesized peptide.

### Storage

-20°C for one year