

## PKI Beta Polyclonal Antibody

### Description

<b>Product type</b>	Primary Antibody
<b>Code</b>	BT-AP07235
<b>Host</b>	Rabbit
<b>Isotype</b>	IgG
<b>Size</b>	20ul, 50ul, 100ul
<b>Immunogen</b>	The antiserum was produced against synthesized peptide derived from human IPKB. AA range:29-78
<b>Mol wt</b>	8468
<b>Species reactivity</b>	Human, Mouse, Rat
<b>Clonality</b>	Polyclonal
<b>Recommended application</b>	IHC-p, IF, ELISA
<b>Concentration</b>	1 mg/ml
<b>Full name</b>	PKI beta Antibody
<b>Synonyms</b>	PKIB; PRKACN2; cAMP-dependent protein kinase inhibitor beta; PKI-beta

This product is for research use only, not for use in human, therapeutic or diagnostic procedure.

### Background

PKIB (protein kinase (cAMP-dependent, catalytic) inhibitor beta) encodes a member of the cAMP-dependent protein kinase inhibitor family. The encoded protein may play a role in the protein kinase A (PKA) pathway by interacting with the catalytic subunit of PKA, and overexpression of PKIB may play a role in prostate cancer. Alternatively spliced transcript variants encoding multiple isoforms have been observed for PKIB.

### Recommended Dilution

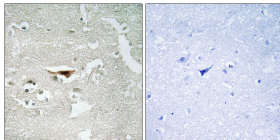
IHC: 1: 100 - 1: 300

IF: 1: 200 - 1: 1000

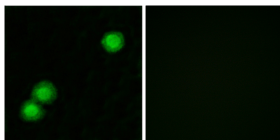
ELISA: 1: 5000

Not yet tested in other applications.

### Images



Immunohistochemistry analysis of paraffin-embedded human brain tissue, using IPKB Antibody. The picture on the right is blocked with the synthesized peptide.



Immunofluorescence analysis of MCF7 cells, using IPKB Antibody. The picture on the right is blocked with the synthesized peptide.

### Storage

-20°C for one year