

PKR Polyclonal Antibody

Description

Product type	Primary Antibody
Code	BT-AP07245
Host	Rabbit
Isotype	IgG
Size	20ul, 50ul, 100ul
Immunogen	The antiserum was produced against synthesized peptide derived from human PKR. AA range:413-462
Mol wt	62094
Species reactivity	Human
Clonality	Polyclonal
Recommended application	WB, IHC-p, ELISA
Concentration	1 mg/ml
Full name	PKR Antibody
Synonyms	EIF2AK2; PKR; PRKR; Interferon-induced; double-stranded RNA-activated protein kinase; Eukaryotic translation initiation factor 2-alpha kinase 2; eIF-2A protein kinase 2; Interferon-inducible RNA-depe

This product is for research use only, not for use in human, therapeutic or diagnostic procedure.

Background

Eukaryotic translation initiation factor 2 alpha kinase 2 encoded by EIF2AK2 is a serine/threonine protein kinase that is activated by autophosphorylation after binding to dsRNA. The activated form of eukaryotic translation initiation factor 2 alpha kinase 2 can phosphorylate translation initiation factor EIF2S1, which in turn inhibits protein synthesis. Eukaryotic translation initiation factor 2 alpha kinase 2 encoded by EIF2AK2 is also activated by manganese ions and heparin. Three transcript variants encoding two different isoforms have been found for EIF2AK2.

Recommended Dilution

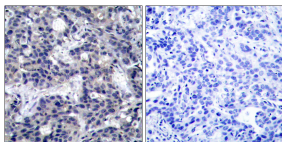
WB: 1: 500 - 1: 2000

IHC: 1: 100 - 1: 300

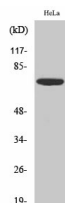
ELISA: 1: 20000

Not yet tested in other applications.

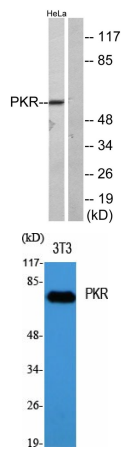
Images



Immunohistochemistry analysis of paraffin-embedded human breast carcinoma tissue, using PKR Antibody. The picture on the right is blocked with the synthesized peptide.



Western Blot analysis of HeLa cells using PKR Polyclonal Antibody diluted at 1:2000



Western blot analysis of lysates from HeLa, using PKR Antibody. The lane on the right is blocked with the synthesized peptide.

Western Blot analysis of various cells using PKR Polyclonal Antibody diluted at 1:2000

Storage

-20°C for one year

501 Changsheng S Rd, Nanhu Dist, Jiaxing, Zhejiang, China

Tel: 86 21 31007137 | E-mail: save@bt-laboratory.com | www.bt-laboratory.com