

## PKR1 Polyclonal Antibody

### Description

<b>Product type</b>	Primary Antibody
<b>Code</b>	BT-AP07246
<b>Host</b>	Rabbit
<b>Isotype</b>	IgG
<b>Size</b>	20ul, 50ul, 100ul
<b>Immunogen</b>	The antiserum was produced against synthesized peptide derived from human PKR1. AA range:19-68
<b>Mol wt</b>	44770
<b>Species reactivity</b>	Human, Mouse, Rat
<b>Clonality</b>	Polyclonal
<b>Recommended application</b>	WB, IF, ELISA
<b>Concentration</b>	1 mg/ml
<b>Full name</b>	PKR1 Antibody
<b>Synonyms</b>	PROKR1; GPR73; PKR1; Prokineticin receptor 1; PK-R1; G-protein coupled receptor 73; G-protein coupled receptor ZAQ; GPR73a

**This product is for research use only, not for use in human, therapeutic or diagnostic procedure.**

### Background

PROKR1 encodes a member of the G-protein-coupled receptor family. prokineticin receptor 1 binds to prokineticins (1 and 2), leading to the activation of MAPK and STAT signaling pathways. Prokineticins are protein ligands involved in angiogenesis and inflammation. Prokineticin receptor 1 is expressed in peripheral tissues such as those comprising the circulatory system, lungs, reproductive system, endocrine system and the gastrointestinal system. Prokineticin receptor 1 may be involved in signaling in human fetal ovary during initiation of primordial follicle formation. Sequence variants in PROKR1 may be associated with recurrent miscarriage.

### Recommended Dilution

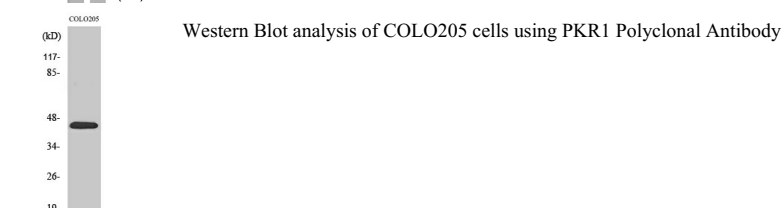
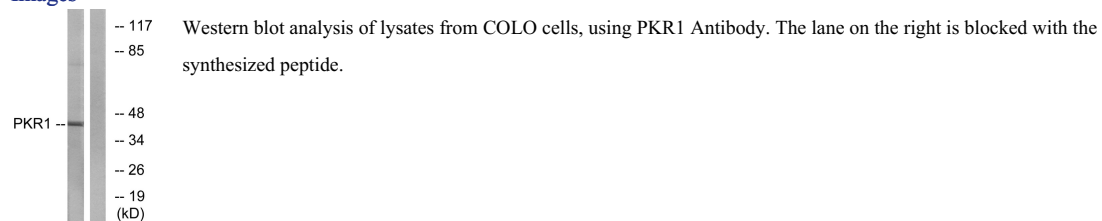
WB: 1: 500 - 1: 2000

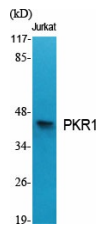
IF: 1: 200 - 1: 1000

ELISA: 1: 20000

Not yet tested in other applications.

### Images





Western Blot analysis of various cells using PKR1 Polyclonal Antibody

### Storage

-20°C for one year

501 Changsheng S Rd, Nanhu Dist, Jiaxing, Zhejiang, China

Tel: 86 21 31007137 | E-mail: [save@bt-laboratory.com](mailto:save@bt-laboratory.com) | [www.bt-laboratory.com](http://www.bt-laboratory.com)