

## CD10 Rabbit Polyclonal Antibody

### Description

Product type	Primary Antibody
Code	BT-AP07247
Host	Rabbit
Isotype	IgG
Size	20ul, 50ul, 100ul
Immunogen	Recombinant Protein of CD10 of MME
Mol wt	N/A
Species reactivity	Human, Rat, Mouse
Clonality	Polyclonal
Recommended application	IHC-p, IF
Concentration	1 mg/ml
Full name	MME
Synonyms	MME; MME

This product is for research use only, not for use in human, therapeutic or diagnostic procedure.

### Background

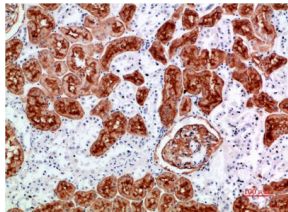
This gene encodes a common acute lymphocytic leukemia antigen that is an important cell surface marker in the diagnosis of human acute lymphocytic leukemia (ALL). This protein is present on leukemic cells of pre-B phenotype, which represent 85% of cases of ALL. This protein is not restricted to leukemic cells, however, and is found on a variety of normal tissues. It is a glycoprotein that is particularly abundant in kidney, where it is present on the brush border of proximal tubules and on glomerular epithelium. The protein is a neutral endopeptidase that cleaves peptides at the amino side of hydrophobic residues and inactivates several peptide hormones including glucagon, enkephalins, substance P, neurotensin, oxytocin, and bradykinin. This gene, which encodes a 100-kD type II transmembrane glycoprotein, exists in a single copy of greater than 45 kb. The 5' untranslated region of this

### Recommended Dilution

IHC: 1: 100 - 1: 200

Not yet tested in other applications.

### Images



Immunohistochemical analysis of paraffin-embedded Human Kidney Tissue using CD10 Rabbit pAb diluted at 1:500.

### Storage

-20°C for 1 year