

Plasminogen receptor Polyclonal Antibody

Description

Product type	Primary Antibody
Code	BT-AP07255
Host	Rabbit
Isotype	IgG
Size	20ul, 50ul, 100ul
Immunogen	The antiserum was produced against synthesized peptide derived from the Internal region of human PLGRKT. AA range:1-50
Mol wt	17201
Species reactivity	Human, Rat
Clonality	Polyclonal
Recommended application	WB, ELISA
Concentration	1 mg/ml
Full name	Plasminogen receptor Antibody
Synonyms	Plasminogen receptor (KT) (Plg-R(KT))

This product is for research use only, not for use in human, therapeutic or diagnostic procedure.

Background

Plasmin dissolves the fibrin of blood clots and acts as a proteolytic factor in a variety of other processes including embryonic development, tissue remodeling, tumor invasion, and inflammation. In ovulation, weakens the walls of the Graafian follicle. It activates the urokinase-type plasminogen activator, collagenases and several complement zymogens, such as C1 and C5. Cleavage of fibronectin and laminin leads to cell detachment and apoptosis. Also cleaves fibrin, thrombospondin and von Willebrand factor. Its role in tissue remodeling and tumor invasion may be modulated by CSPG4. Binds to cells. Angiostatin is an angiogenesis inhibitor that blocks neovascularization and growth of experimental primary and metastatic tumors in vivo.

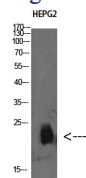
Recommended Dilution

WB: 1: 500 - 2000

ELISA: 1: 10000 - 20000

Not yet tested in other applications.

Images



Western Blot analysis of HEPG2 cells using Plasminogen receptor Polyclonal Antibody diluted at 1:500.
Secondary antibody was diluted at 1:20000

Storage

-20°C for one year