

PLC-XD1 Polyclonal Antibody

Description

| | |
|--------------------------------|--|
| Product type | Primary Antibody |
| Code | BT-AP07271 |
| Host | Rabbit |
| Isotype | IgG |
| Size | 20ul, 50ul, 100ul |
| Immunogen | The antiserum was produced against synthesized peptide derived from human PLCXD1. AA range:187-236 |
| Mol wt | 36668 |
| Species reactivity | Human |
| Clonality | Polyclonal |
| Recommended application | IHC-p, ELISA |
| Concentration | 1 mg/ml |
| Full name | PLC-XD1 Antibody |
| Synonyms | PLCXD1; PI-PLC X domain-containing protein 1 |

This product is for research use only, not for use in human, therapeutic or diagnostic procedure.

Background

PLCXD1 (phosphatidylinositol specific phospholipase C X domain containing 1) is the most terminal protein-coding gene in the pseudoautosomal (PAR) region on chromosomes X and Y. Alternate splicing results in multiple transcript variants.

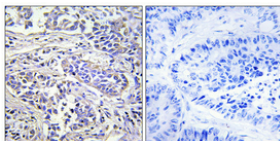
Recommended Dilution

IHC: 1: 100 - 1: 300

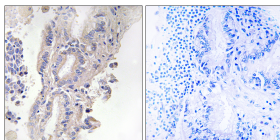
ELISA: 1: 40000

Not yet tested in other applications.

Images



Immunohistochemical analysis of paraffin-embedded Human lung cancer. Antibody was diluted at 1:100(4° overnight). High-pressure and temperature Tris-EDTA,pH8.0 was used for antigen retrieval. Negative contrl (right) obtained from antibody was pre-absorbed by immunogen peptide.



Immunohistochemistry analysis of paraffin-embedded human lung carcinoma, using PLCXD1 Antibody. The picture on the right is blocked with the synthesized peptide.

Storage

-20°C for one year