

## Plk1 Polyclonal Antibody

### Description

Product type	Primary Antibody
Code	BT-AP07278
Host	Rabbit
Isotype	IgG
Size	20ul, 50ul, 100ul
Immunogen	Synthesized peptide derived from Plk1 . at AA range: 80-160
Mol wt	68255
Species reactivity	Human, Mouse, Rat
Clonality	Polyclonal
Recommended application	WB, ELISA
Concentration	1 mg/ml
Full name	Plk1 Antibody
Synonyms	PLK1; PLK; Serine/threonine-protein kinase PLK1; Polo-like kinase 1; PLK-1; Serine/threonine-protein kinase 13; STPK13

This product is for research use only, not for use in human, therapeutic or diagnostic procedure.

### Background

Serine/threonine-protein kinase PLK1 kinase encoded by PLK1 belongs to the CDC5/Polo subfamily. It is highly expressed during mitosis and elevated levels are found in many different types of cancer. Depletion of this protein in cancer cells dramatically inhibited cell proliferation and induced apoptosis; hence, it is a target for cancer therapy.

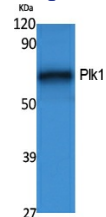
### Recommended Dilution

WB: 1: 500 - 1: 2000

ELISA: 1: 20000

Not yet tested in other applications.

### Images



Western Blot analysis of extracts from NIH-3T3 cells, using Plk1 Polyclonal Antibody. Secondary antibody was diluted at 1:20000

### Storage

-20°C for one year