

NFκB-p100(Phospho Ser865) Polyclonal Antibody

Description

Product type	Primary Antibody
Code	BT-AP07279
Host	Rabbit
Isotype	IgG
Size	100ul, 50ul, 20ul
Immunogen	The antiserum was produced against synthesized peptide derived from human NF-kappaB p100/p52 around the phosphorylation site of Ser865. AA range:833-882
Mol wt	96749
Species reactivity	Human, Mouse, Rat
Clonality	Polyclonal
Recommended application	WB, IHC-p, IP, IF, ICC, ELISA
Concentration	1 mg/ml
Full name	Nuclear factor NF-kappa-B p100 subunit
Synonyms	Nuclear factor NF-kappa-B p100 subunit; NFKB2; LYT10; Nuclear factor NF-kappa-B p100 subunit; DNA-binding factor KBF2; H2TF1; Lymphocyte translocation chromosome 10 protein; Nuclear factor of kappa light polypeptide gene enhancer in B-cells 2; Oncogene Lyt-10; Lyt10

This product is for research use only, not for use in human, therapeutic or diagnostic procedure.

Background

This gene encodes a subunit of the transcription factor complex nuclear factor-kappa-B (NFκB). The NFκB complex is expressed in numerous cell types and functions as a central activator of genes involved in inflammation and immune function. The protein encoded by this gene can function as both a transcriptional activator or repressor depending on its dimerization partner. The p100 full-length protein is co-translationally processed into a p52 active form. Chromosomal rearrangements and translocations of this locus have been observed in B cell lymphomas, some of which may result in the formation of fusion proteins. There is a pseudogene for this gene on chromosome 18. Alternative splicing results in multiple transcript variants.

Recommended Dilution

WB: 1: 500 - 1: 2000

IP: 2 - 5 ug: mg

IHC-p: 1: 100 - 1: 300

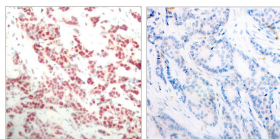
IF: 1: 200 - 1: 1000

ICC: 1: 200 - 1: 1000

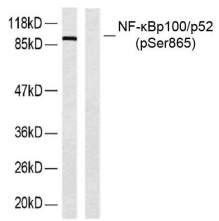
ELISA: 1: 20000

Not yet tested in other applications.

Images



Immunohistochemistry analysis of paraffin-embedded human breast carcinoma, using NF-kappaB p100/p52 (Phospho-Ser865) Antibody. The picture on the right is blocked with the phospho peptide.



Western blot analysis of lysates from ovary cancer, using NF-kappaB p100/p52 (Phospho-Ser865) Antibody. The lane on the left is blocked with the phospho peptide.

Storage

-20°C for 1 year

501 Changsheng S Rd, Nanhu Dist, Jiaxing, Zhejiang, China

Tel: 86 21 31007137 | E-mail: save@bt-laboratory.com | www.bt-laboratory.com