

PLK-5 Polyclonal Antibody

Description

Product type	Primary Antibody
Code	BT-AP07281
Host	Rabbit
Isotype	IgG
Size	20ul, 50ul, 100ul
Immunogen	The antiserum was produced against synthesized peptide derived from human PLK5. AA range:131-180
Mol wt	60697
Species reactivity	Human
Clonality	Polyclonal
Recommended application	WB, ELISA
Concentration	1 mg/ml
Full name	PLK-5 Antibody
Synonyms	PLK5; PLK5P; FG060302; Inactive serine/threonine-protein kinase PLK5; Polo-like kinase 5; PLK-5

This product is for research use only, not for use in human, therapeutic or diagnostic procedure.

Background

PLK5 (Polo Like Kinase 5) is a Protein Coding gene. Gene Ontology (GO) annotations related to PLK5 include transferase activity, transferring phosphorus-containing groups and protein kinase activity. An important paralog of PLK5 is PLK4.

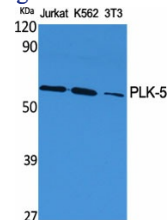
Recommended Dilution

WB: 1: 500 - 1: 2000

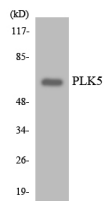
ELISA: 1: 10000

Not yet tested in other applications.

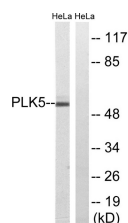
Images



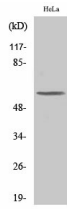
Western Blot analysis of various cells using PLK-5 Polyclonal Antibody



Western blot analysis of the lysates from HeLa cells using PLK5 antibody.



Western blot analysis of lysates from HeLa cells, using PLK5 Antibody. The lane on the right is blocked with the synthesized peptide.



Western Blot analysis of COLO205 cells using PLK-5 Polyclonal Antibody

Storage

-20°C for one year

501 Changsheng S Rd, Nanhu Dist, Jiaxing, Zhejiang, China

Tel: 86 21 31007137 | E-mail: save@bt-laboratory.com | www.bt-laboratory.com