

CCD50 Rabbit Polyclonal Antibody

Description

Product type	Primary Antibody
Code	BT-AP07289
Host	Rabbit
Isotype	IgG
Size	100ul, 50ul, 20ul
Immunogen	Synthesized peptide derived from human CCD50
Mol wt	33660
Species reactivity	Human, Mouse, Rat
Clonality	Polyclonal
Recommended application	WB
Concentration	1 mg/ml
Full name	CCD50
Synonyms	CCD50

This product is for research use only, not for use in human, therapeutic or diagnostic procedure.

Background

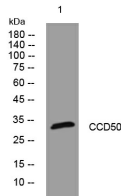
This gene encodes a soluble, cytoplasmic, tyrosine-phosphorylated protein with multiple ubiquitin-interacting domains. Mutations in this gene cause nonsyndromic, postlingual, progressive sensorineural DFNA44 hearing loss. In mouse, the protein is expressed in the inner ear during development and postnatal maturation and associates with microtubule-based structures. This protein may also function as a negative regulator of NF- κ B signaling and as an effector of epidermal growth factor (EGF)-mediated cell signaling. Alternative splicing results in multiple transcript variants encoding distinct isoforms.

Recommended Dilution

WB: 1: 500 - 1: 2000

Not yet tested in other applications.

Images



Western blot analysis of lysates from MCF-7 cells, primary antibody was diluted at 1:1000, 4°C overnight

Storage

-20°C for 1 year