

PMS1 Polyclonal Antibody

Description

Product type	Primary Antibody
Code	BT-AP07300
Host	Rabbit
Isotype	IgG
Size	20ul, 50ul, 100ul
Immunogen	The antiserum was produced against synthesized peptide derived from human PMS1. AA range:441-490
Mol wt	105830
Species reactivity	Human
Clonality	Polyclonal
Recommended application	WB, IHC-p, ELISA
Concentration	1 mg/ml
Full name	PMS1 Antibody
Synonyms	PMS1; PMSL1; PMS1 protein homolog 1; DNA mismatch repair protein PMS1

This product is for research use only, not for use in human, therapeutic or diagnostic procedure.

Background

PMS1 encodes a protein belonging to the DNA mismatch repair mutL/hexB family. PMS1 homolog 1, mismatch repair system component is thought to be involved in the repair of DNA mismatches, and it can form heterodimers with MLH1, a known DNA mismatch repair protein. Mutations in PMS1 cause hereditary nonpolyposis colorectal cancer type 3 (HNPCC3) either alone or in combination with mutations in other genes involved in the HNPCC phenotype, which is also known as Lynch syndrome.

Recommended Dilution

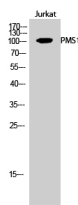
WB: 1: 500 - 1: 2000

IHC: 1: 100 - 1: 300

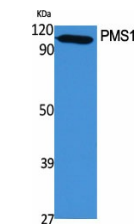
ELISA: 1: 10000

Not yet tested in other applications.

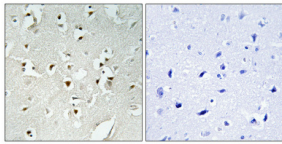
Images



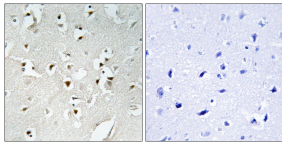
Western Blot analysis of Jurkat cells using PMS1 Polyclonal Antibody cells nucleus.



Western Blot analysis of various cells using PMS1 Polyclonal Antibody cells nucleus.



Immunohistochemical analysis of paraffin-embedded Human brain. Antibody was diluted at 1:100(4° overnight). High-pressure and temperature Tris-EDTA,pH8.0 was used for antigen retrieval. Negative contrl (right) obtained from antibody was pre-absorbed by immunogen peptide.



Immunohistochemistry analysis of paraffin-embedded human brain, using PMS1 Antibody. The picture on the right is blocked with the synthesized peptide.

Storage

-20°C for one year

501 Changsheng S Rd, Nanhu Dist, Jiaxing, Zhejiang, China

Tel: 86 21 31007137 | E-mail: save@bt-laboratory.com | www.bt-laboratory.com