

PMS2/PMS2CL Polyclonal Antibody

Description

| | |
|--------------------------------|--|
| Product type | Primary Antibody |
| Code | BT-AP07302 |
| Host | Rabbit |
| Isotype | IgG |
| Size | 20ul, 50ul, 100ul |
| Immunogen | The antiserum was produced against synthesized peptide derived from human PMS2CL. AA range:125-174 |
| Mol wt | 20909 |
| Species reactivity | Human |
| Clonality | Polyclonal |
| Recommended application | IHC-p, ELISA |
| Concentration | 1 mg/ml |
| Full name | PMS2/PMS2CL Antibody |
| Synonyms | PMS2CL; Protein PMS2CL; PMS2-C terminal-like protein; PMS2; PMSL2; Mismatch repair endonuclease PMS2; DNA mismatch repair protein PMS2; PMS1 protein homolog 2 |

This product is for research use only, not for use in human, therapeutic or diagnostic procedure.

Background

The protein encoded by PMS2 (PMS1 homolog 2, mismatch repair system component) is a key component of the mismatch repair system that functions to correct DNA mismatches and small insertions and deletions that can occur during DNA replication and homologous recombination. This protein forms heterodimers with the gene product of the mutL homolog 1 (MLH1) gene to form the MutL-alpha heterodimer. The MutL-alpha heterodimer possesses an endonucleolytic activity that is activated following recognition of mismatches and insertion/deletion loops by the MutS-alpha and MutS-beta heterodimers, and is necessary for removal of the mismatched DNA. There is a DQHA (X)2E (X)4E motif found at the C-terminus of the protein encoded by this gene that forms part of the active site of the nuclease. Mutations in PMS2 have been associated with hereditary nonpolyposis colorectal cancer (HNPCC; also known as Lynch syndrome) and Turcot syndrome.

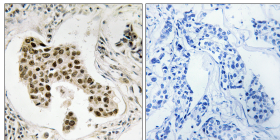
Recommended Dilution

IHC: 1: 100 - 1: 300

ELISA: 1: 5000

Not yet tested in other applications.

Images



Immunohistochemistry analysis of paraffin-embedded human breast carcinoma, using PMS2/PMS2CL Antibody. The picture on the right is blocked with the synthesized peptide.

Storage

-20°C for one year