

POLR2E Polyclonal Antibody

Description

Product type	Primary Antibody
Code	BT-AP07318
Host	Rabbit
Isotype	IgG
Size	20ul, 50ul, 100ul
Immunogen	The antiserum was produced against synthesized peptide derived from human RPAB1. AA range:21-70
Mol wt	24551
Species reactivity	Human, Mouse, Rat
Clonality	Polyclonal
Recommended application	WB, IHC-p, ELISA
Concentration	1 mg/ml
Full name	POLR2E Antibody
Synonyms	POLR2E; DNA-directed RNA polymerases I; II, and III subunit RPABC1; RNA polymerases I, II, and III subunit ABC1; DNA-directed RNA polymerase II 23 kDa polypeptide; DNA-directed RNA polymerase II subu

This product is for research use only, not for use in human, therapeutic or diagnostic procedure.

Background

POLR2E (RNA polymerase II subunit E) encodes the fifth largest subunit of RNA polymerase II, the polymerase responsible for synthesizing messenger RNA in eukaryotes. This subunit is shared by the other two DNA-directed RNA polymerases and is present in two-fold molar excess over the other polymerase subunits. An interaction between this subunit and a hepatitis virus transactivating protein has been demonstrated, suggesting that interaction between transcriptional activators and the polymerase can occur through this subunit. A pseudogene is located on chromosome 11. Three transcript variants encoding two different isoforms have been found for POLR2E.

Recommended Dilution

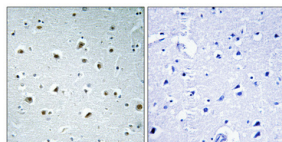
WB: 1: 500 - 1: 2000

IHC: 1: 100 - 1: 300

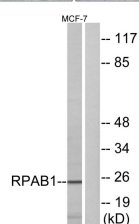
ELISA: 1: 40000

Not yet tested in other applications.

Images



Immunohistochemical analysis of paraffin-embedded Human brain. Antibody was diluted at 1:100(4° overnight). High-pressure and temperature Tris-EDTA,pH8.0 was used for antigen retrieval. Negative contrl (right) obtained from antibody was pre-absorbed by immunogen peptide.



Western blot analysis of lysates from MCF-7 cells, using RPAB1 Antibody. The lane on the right is blocked with the synthesized peptide.

Storage

-20°C for one year

501 Changsheng S Rd, Nanhu Dist, Jiaxing, Zhejiang, China

Tel: 86 21 31007137 | E-mail: save@bt-laboratory.com | www.bt-laboratory.com