

POLR2J1 Polyclonal Antibody

Description

Product type	Primary Antibody
Code	BT-AP07319
Host	Rabbit
Isotype	IgG
Size	20ul, 50ul, 100ul
Immunogen	The antiserum was produced against synthesized peptide derived from human RPB11. AA range:10-59
Mol wt	13293
Species reactivity	Human, Mouse
Clonality	Polyclonal
Recommended application	WB, ELISA
Concentration	1 mg/ml
Full name	POLR2J1 Antibody
Synonyms	POLR2J; POLR2J1; DNA-directed RNA polymerase II subunit RPB11-a; RNA polymerase II subunit B11-a; RPB11a; DNA-directed RNA polymerase II subunit J-1; RNA polymerase II 13.3 kDa subunit

This product is for research use only, not for use in human, therapeutic or diagnostic procedure.

Background

POLR2J (RNA polymerase II subunit J) encodes a subunit of RNA polymerase II, the polymerase responsible for synthesizing messenger RNA in eukaryotes. The product of POLR2J exists as a heterodimer with another polymerase subunit; together they form a core subassembly unit of the polymerase. Two similar genes are located nearby on chromosome 7q22 and a pseudogene is found on chromosome 7p13.

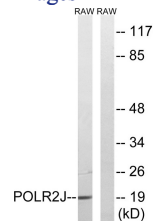
Recommended Dilution

WB: 1: 500 - 1: 2000

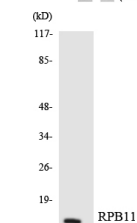
ELISA: 1: 40000

Not yet tested in other applications.

Images



Western blot analysis of lysates from RAW264.7 cells, using RPB11 Antibody. The lane on the right is blocked with the synthesized peptide.



Western blot analysis of the lysates from HeLa cells using RPB11 antibody.

Storage

-20°C for one year

501 Changsheng S Rd, Nanhu Dist, Jiaxing, Zhejiang, China

Tel: 86 21 31007137 | E-mail: save@bt-laboratory.com | www.bt-laboratory.com